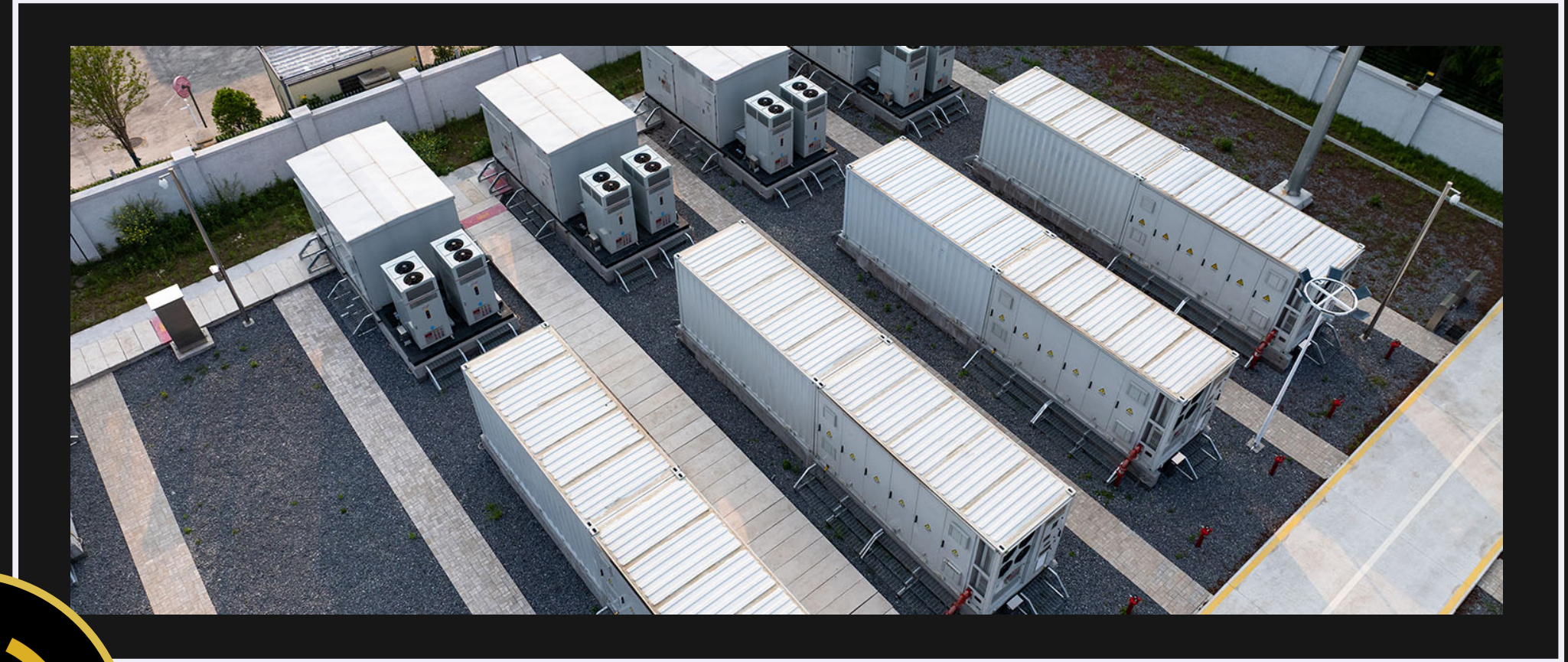




ENERGY SERVICES



BATTERY ENERGY STORAGE SYSTEMS | NETWORK, ALARM & MONITORING | SOLAR SYSTEMS | EV CHARGING STATIONS | MICROGRID



CONTENTS

- Introduction and Overview
- Project Portfolio
 - BESS Project, AZ
 - BESS Project, CA
 - Solar Project with BESS, CO
 - Solar Project, IA
 - Solar Farm Maintenance, U.S.
 - CALeVIP Program / NEVI Program / U.S. EV Charging Network
- Projects Pending (expected completion by 2030)
 - Microgrid Project, TX
 - Microgrid Project, CA
 - Solar/BESS Project, CA
- Summary / Contact



INTRODUCTION & OVERVIEW

Since 1975, Alamon has been a key resource for Communication, Utility, Energy and Enterprise technology deployment throughout the U.S.

Employee-owned, safety-focused and known for high quality work and exceptional customer service, Alamon self-performs a wide variety of critical infrastructure installation and maintenance services for some of the nation's largest communication, energy and utility companies.

From AT&T and Avangrid on one end of the alphabet, to T-Mobile, Verizon, and Ziplly Fiber on the other, Alamon has been trusted with the infrastructure of industry leaders on a wide variety of projects with varying scopes of work.





PROJECT PORTFOLIO

The following pages contain Alamon project examples.

Please note, information is limited due to strict non-disclosure agreements.

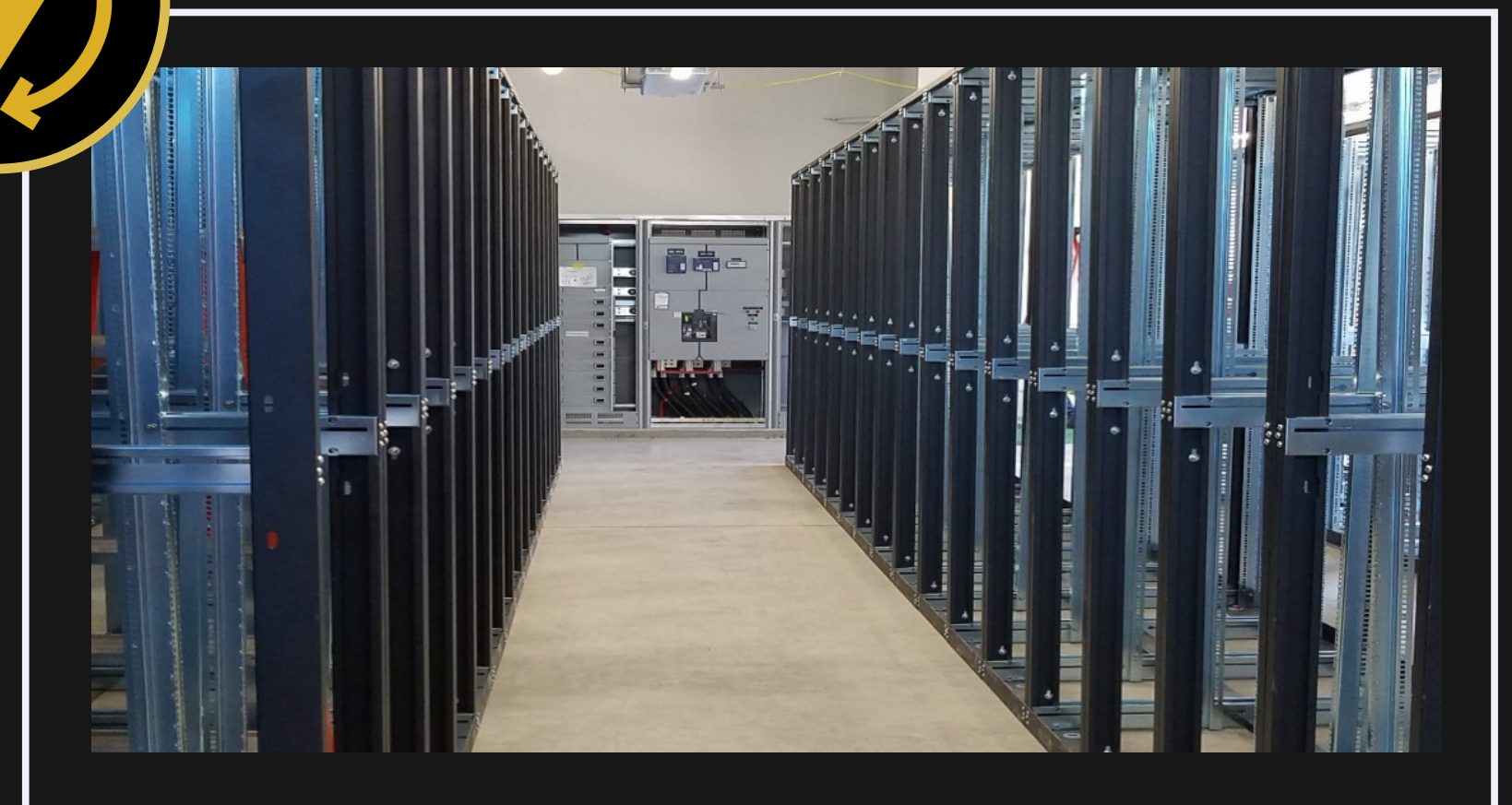
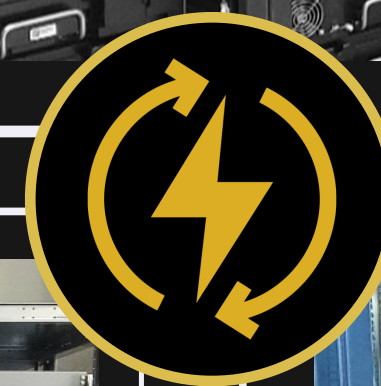




BESS PROJECT ARIZONA

10 MW 40 Hour BESS Power Plant Installation

- 236 Battery Racks
- 3304 Lithium Ion Batteries
- Four 4000 AMP Switchboards
- 120/208v & 480v A/C Installation and Test
- 480v Megger Test Verification
- Four fully equipped Telco Communication Racks
- Ethernet, and USB cable Installation and Testing
- Fiber Splicing and OTDR Testing
- OSP Fiber Splicing
- ESTOP circuits Installation and Testing
- Wireless access point Installation and Testing
- Environmental monitoring equipment, Leak Ropes, Cameras, Temperature Sensors





BESS PROJECT CALIFORNIA

20 MW BESS Power Plant Installation

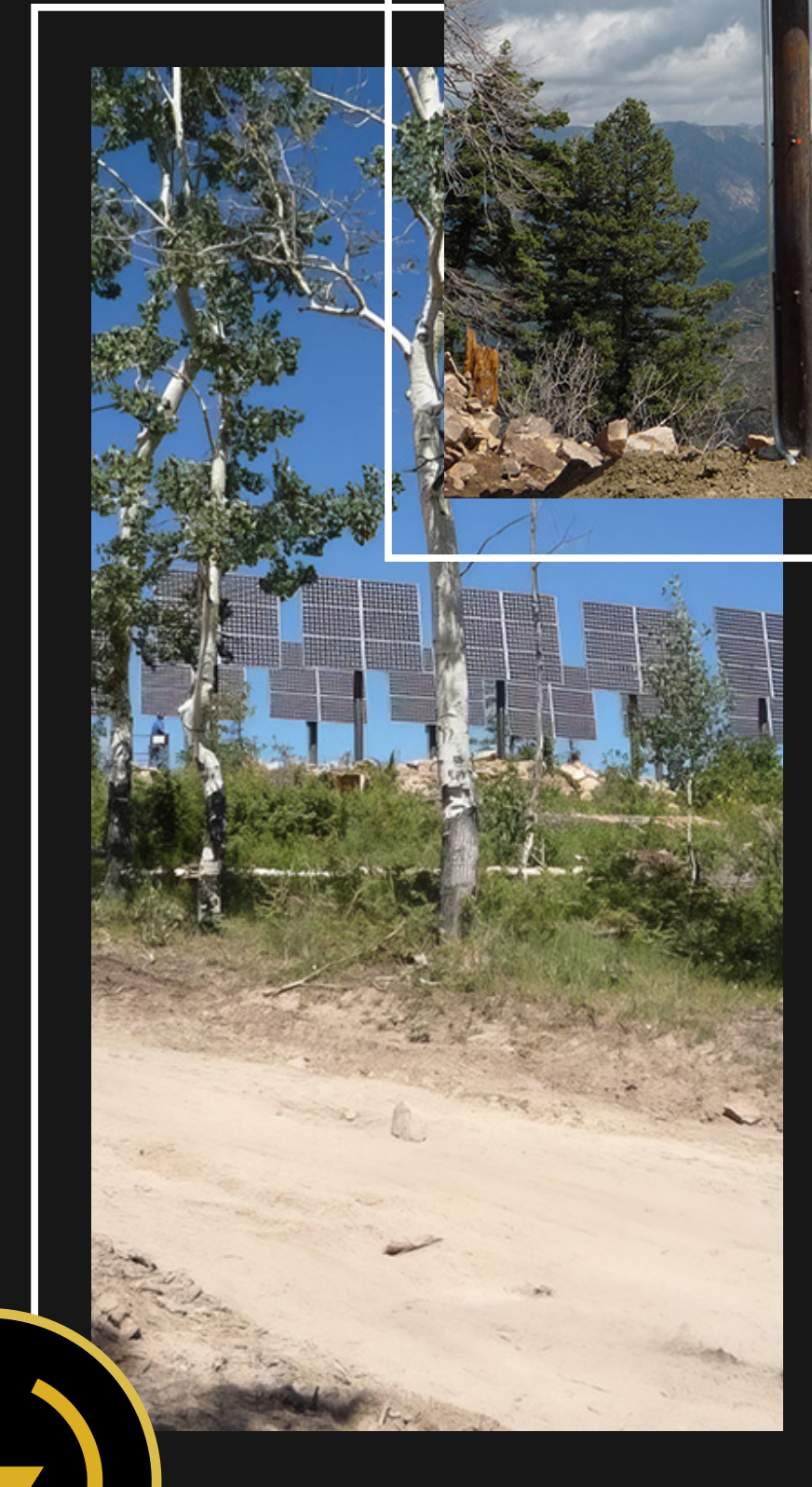
- On-Site Delivery Assistance
- Finish-Assembly of Containers
- Paint Touch-Up and Repair
- HVAC Installation and Tuning
- QA / QC Defect Remediation (Replacement of components damaged during shipment and Updates due to code updates)
- Component Replacements (Warranty Repair Work)
- UPS Battery Installation
- Fire Suppression System Finish Installation and Testing (Testing Audio and Visual Devices, Envelope Integrity Testing)
- On-Site Container OEM Support





SOLAR / BESS PROJECT COLORADO

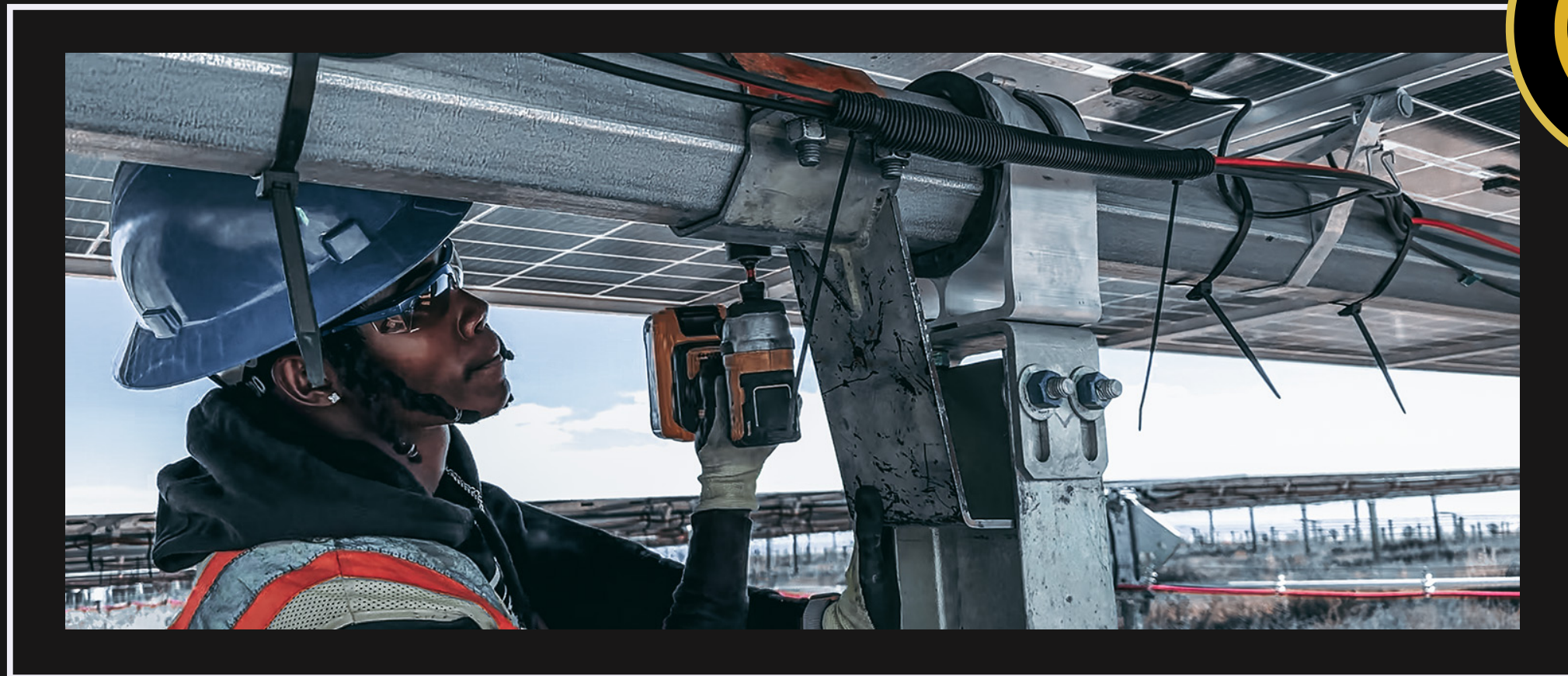
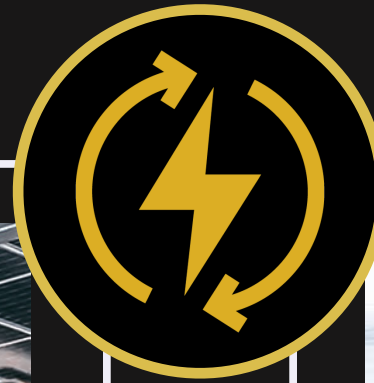
- Remote site located at 9,500 feet elevation
- System designed to withstand 150mph winds
- Performed civil construction services
- Performed installation of 96 175W solar panels
- Performed installation of power plant and batteries





SOLAR PROJECT IOWA

- 206.4 KWDC 150.0 KWAC Rooftop PV System
- Ballasted PanelClaw FR Series Racking System
- 359 modules installed on three different roof levels



SOLAR FARM MAINTENANCE MULTIPLE U.S. LOCATIONS

Completed bushing replacement project for multiple Solar Farms across the U.S.



EV PASSPORT CHARGER INSTALLATION

LA MIRADA, CA

- Pre-construction site walk and cellular infrastructure analysis
- System design
- Plan review and submission to the city for permit
- Installation of new 250amp, 3ph panelboard
- Installation of 6 new 11kw EV chargers
- Installation of DAS system to support the communication of the EV chargers
- Installation of concrete wheel stops



CALeVIP PROGRAM NEVI PROGRAM U.S. EV NETWORK APPROVED CONTRACTOR

- Approved as an installation contractor for the CALeVIP Program (provides \$55M in incentives for installing high-power DC fast chargers at public locations in CA)
- Approved as an installation subcontractor for the NEVI Program by two major EPCs
- Approved installation subcontractor for two Design/Build companies for nationwide EV charging network





SUMMARY | CONTACT

BUSINESS CODES

Federal ID #: 810351417

Cage Code: 3BW85

Dun & Bradstreet #: 010366136

BOND LIMITS*

\$30M aggregate (plus)

\$15M single (plus)

*Can be raised as needed

CONTACT

Alamon, Inc.

315 W. Idaho St.

Kalispell, MT 59901

800.252.8838

www.alamon.com

Patrick Doyle

Business Development Mgr

Energy Services

patrick.doyle@alamon.com

919.306.3147