



ENERGY SERVICES

BUILDING THE FUTURE NOW





TABLE OF CONTENTS

- WHO WE ARE 01
- WHERE WE ARE 02
- WHY ALAMON? 03-05
- SAFETY COMMITMENT 06
- ALAMON CAPABILITIES OVERVIEW.....07-09
- ENERGY SERVICES 10-16
- BUSINESS CODES & BOND LIMITS..... 17
- CONTACT 18





WHO WE ARE

Since 1975, Alamon has been a key resource for Communication, Utility, Energy and Enterprise technology deployment throughout the U.S.

Employee-owned, safety-focused and known for sustained excellence and exceptional customer service, Alamon self-performs a wide variety of critical infrastructure installation and maintenance services for some of the nation's largest communication, energy and utility companies.

From AT&T and Avangrid on one end of the alphabet, to T-Mobile, Verizon, and Zply Fiber on the other, Alamon has been trusted with the infrastructure of industry leaders on a wide variety of projects with varying scopes of work.

WHERE WE ARE

With corporate headquarters in Kalispell, MT and satellite offices and warehouses across the U.S., Alamon offers broad infrastructure installation and maintenance capabilities to clients in all 50 states.

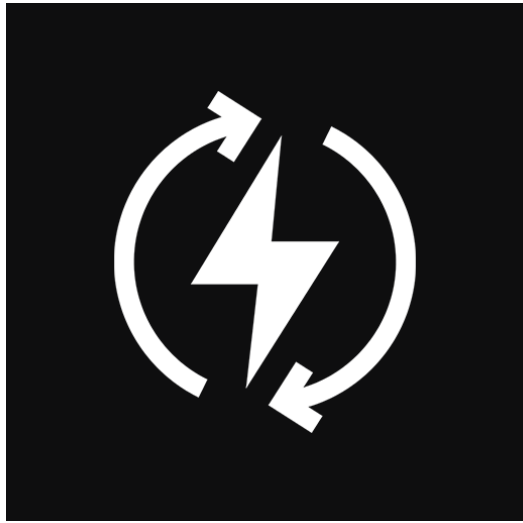
OFFICES

- Arizona
- California
- Colorado
- Florida
- Idaho
- Kansas
- Montana (HQ)
- Nevada
- New York
- North Carolina
- Oregon
- Pennsylvania
- Texas
- Washington



EMPLOYEE-OWNED

As an employee-owned company, Alamon has a strong culture of accountability, safety and quality workmanship that are the core strengths of our business.



WHY ALAMON?

- U.S. based company with 50 years of experience
- Ability to serve clients across all 50 states
- Technical expertise in turnkey installation of cutting edge equipment for the Energy, Utility and Communication industries
- Exemplary employee and subcontractor safety program
- High quality ratings from clients



BUILDING THE FUTURE NOW



EARNED TRUST

Alamon teams' reliability and technological proficiency have produced professional relationships with Amazon, AT&T, Avangrid, BNSF Railway, ConEdison, Ericsson, Frontier, Liberty Mutual, Lumen, Pioneer Telephone Cooperative, T-Mobile, Verizon, Vertiv, Wendy's, Ziplly Fiber and more.



Our crews can be found in the busiest cities and the most remote rural locations in the country. We have a strong track record of managing and deploying an experienced mobile workforce to ensure our clients' projects are completed safely, on-time and on budget, no matter the location.

WHAT OUR CLIENTS SAY

“Alamon’s expertise and efficient contract execution are among the best in the business.”

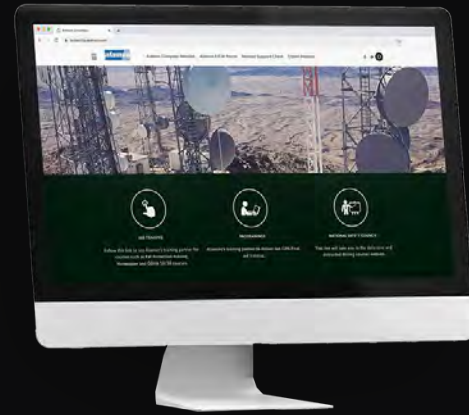
“Their staff is knowledgeable, thorough and detail-oriented. Highly recommended.”

“I would gladly have these gentlemen work on any project I have in the future.”



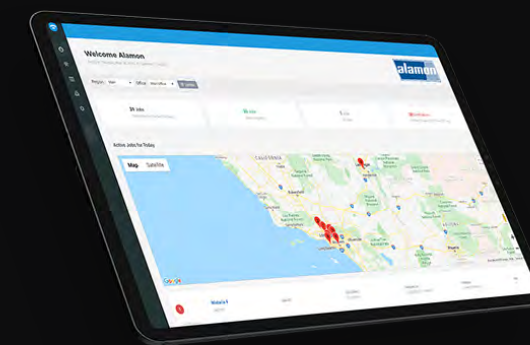


ALAMON UNIVERSITY



Alamon U was developed in-house specifically to address the challenge of training a mobile workforce, and is now an essential online learning environment for our employees across the U.S.

SAFETY MANAGEMENT TECHNOLOGY



Alamon utilizes technology that provides real-time crew tracking and mission-critical on-site safety documentation, including Job Safety Analysis, Site Rescue plans, Personnel Certifications, Aerial Lift inspections, and more.

SAFETY COMMITMENT

Our safety programs are for all employees and subcontractors. The Alamon Safety Committee consists of a broad range of members with decades of experience in the industries we serve. We engage with field and office personnel monthly to get our safety message from the top to the boots on the ground personnel. Weekly safety calls occur with each of our groups, and we continually evaluate and improve processes to ensure our teams go home in the same condition they came to work in.

Alamon is a member of ISNetworld, Avetta and Browz.

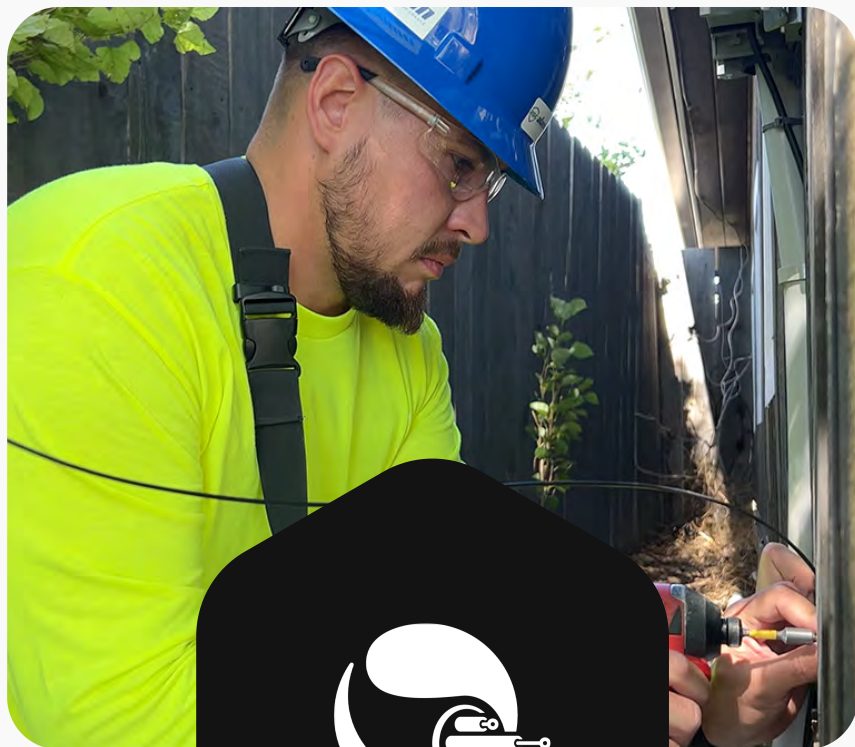
.57 EMR 2024





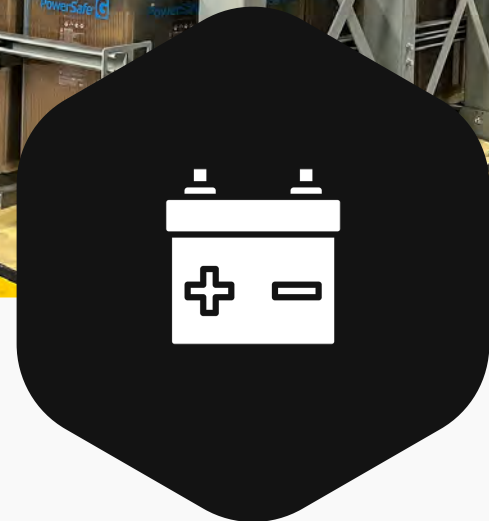
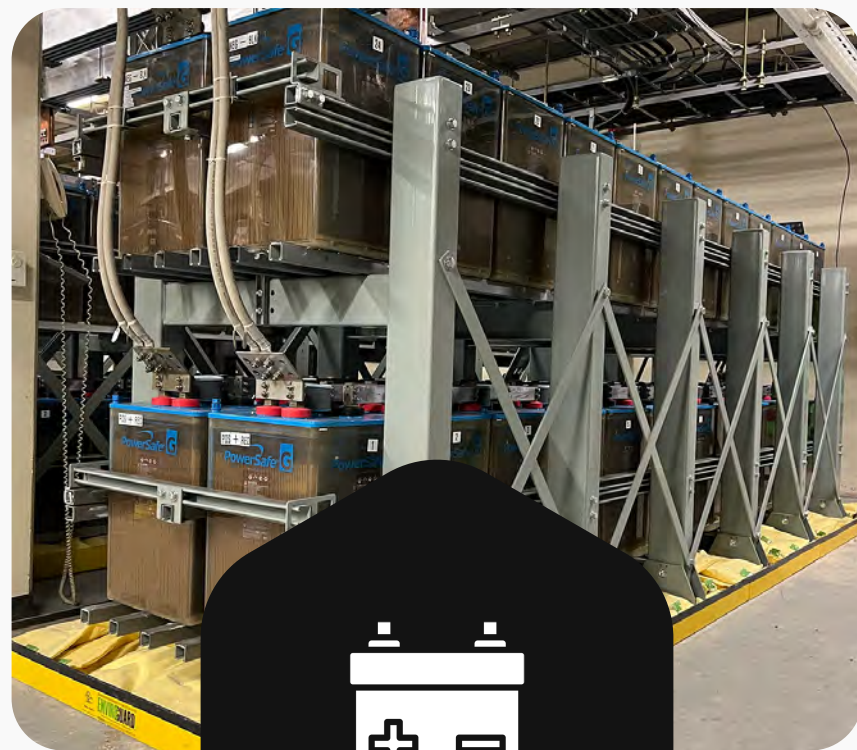
CAPABILITIES

BUILDING THE FUTURE NOW



Broadband Deployment Services

- FTTX-FTTH
- Aerial Drops
- Single or Small Fiber Splice Repair
- Fiber Verification
- Copper Troubleshoot & Repair
- Home or Business Pre-Wire



DC Power Services

- Project Planning & Management
- Field & Detailed Engineering
- DC Power Systems Installation
- Alarm & Environmental Monitoring Systems
- Asset Management
- VISIO | AutoCAD



Enterprise Technical Services

- Structured Cabling
- Audio/Visual Integration
- Wireless Technology Services
- Distributed Antenna Systems (DAS)
- Break Fix Services
- Sound Masking for Speech Privacy

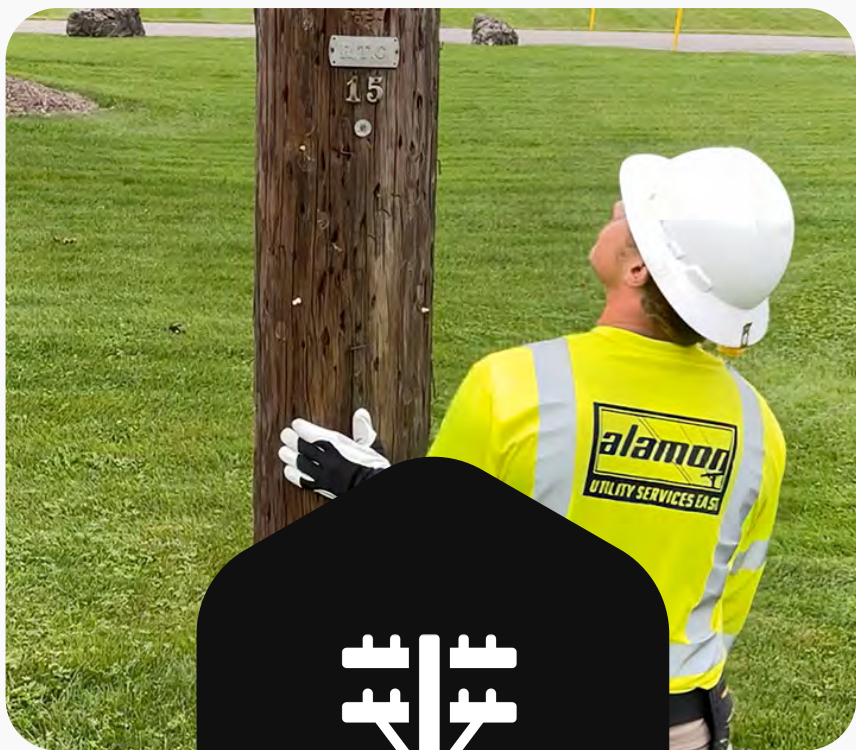
CAPABILITIES

BUILDING THE FUTURE NOW



Network Services

- DC Power Engineering, Installation & Testing
- Integration/Programming & Testing
- Office Grounding Surveys
- OSP Cabinet Builds
- COEI Engineering & Installation
- Fiber Characterization
- Logistics of Materials to Sites



Utility Services

- Groundline Pole Inspection
- Non-Destructive Pole Inspection
- Overhead Safety Inspection
- Asset Inventory
- Pole Reinforcement
- Emergency Restoration Support
- Pole Fire Wrap



Wireless Services

- 5G Equipment Installation
- Small Cell Installation
- Cellular Installation
- Microwave Installation & Line of Sight Surveys
- AC & DC Power Services
- Civil Construction
- Fiber Splicing



ENERGY SERVICES

- OVERALL CAPABILITIES
- BESS INSTALLATION
- SOLAR INSTALLATION
- EV CHARGING STATION INSTALLATION
- CIVIL CONSTRUCTION
- PREFABRICATION





ENERGY SERVICES

OVERALL CAPABILITIES



- Turnkey Installations
- EPC Solutions
- In-House AC and DC Technicians
- Aboveground and Underground Installations
- Cable Tray Installations
- Traditional Electrical Services
- Integration into Existing Infrastructure
- Low and Medium Voltage Cable Installation
- Final Quality Inspections



ENERGY SERVICES

BESS INSTALLATION

- In-Building and Modular Deployment
- Civil Construction (Trenching, Concrete, Foundations, Underground Conduit)
- Battery Rack Assembly, Installation and Anchoring
- Battery Installation & Battery Module Installation
- Battery Load Testing
- HVAC Installation/Commissioning
- Communications Cabling
- ICT Equipment Installation for Monitoring , Control, Data Collection, Bidirectional Communication of Information and Interconnection with Other Systems



50
YEARS
ANNIVERSARY
alamon
EMPLOYEE-OWNED



50
YEARS
ANNIVERSARY

alamon
EMPLOYEE-OWNED

ENERGY SERVICES

SOLAR INSTALLATION

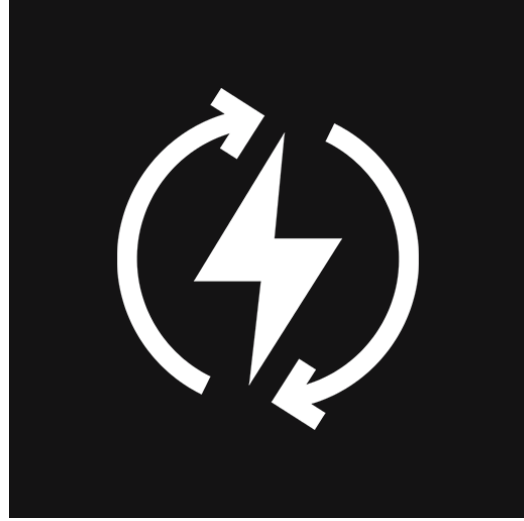
- Civil Construction (Trenching, Concrete, Foundations, Underground Conduit)
- Module Installation
- Inverter Installation
- Ground Mount Systems Installation
- Roof Mount Systems Installation
- Repair & Maintenance



ENERGY SERVICES

EV CHARGING STATION INSTALLATION

- Civil Construction (Trenching, Concrete, Foundations, Underground Conduit)
- Commercial Level 2 Charging Stations
- DC Fast Charge Stations
- Installations in Multi-Family, Retail, Hospitality, Commercial, and Industrial Locations
- Repair & Maintenance



ENERGY SERVICES

CIVIL CONSTRUCTION

- Site Development
- Concrete Installation
- Building Construction
- Equipment Pads
- Underground Conduit Installation
- Underground Utilities
- Foundations
- H Pile Installation



50
YEARS
ANNIVERSARY

alamon
EMPLOYEE-OWNED



ENERGY SERVICES

PREFABRICATION

Alamon's Prefabrication Department builds key project components to exacting specifications in a controlled warehouse setting.

With careful attention to detail, our team ensures rigorous quality control and delivers creative, precise prefabricated solutions.

Our process delivers the highest quality components designed to accelerate the installation process on site, reducing labor costs and minimizing delays.





SIC & NAICS CODES

SIC:

1731 & 1731-27 (Telecommunications Contractors)

1799, 4899, 7363, 7373, 2491

NAICS:

541519, 237110, 237130, 238210, 811213, 321114

BUSINESS CODES

Federal ID #: 810351417

Cage Code: 3BW85

Dun & Bradstreet #: 010366136

BOND LIMITS*

\$30M aggregate (plus)

\$15M single (plus)

*Can be raised if needed.



CONTACT



PATRICK DOYLE

Business Development

919.306.3147

patrick.doyle@alamon.com

JUSTIN PRATT

Supervisor, Energy Services

406.885.9421

justin.pratt@alamon.com



WEBSITE

www.alamon.com

SOCIAL MEDIA

