



TO INSPECT AND TO PRESERVE

AN EMPLOYEE-OWNED UTILITY SERVICES PROVIDER

TABLE OF CONTENTS

- WHO WE ARE 01-03
- WHERE WE ARE 04
- WHY ALAMON? 05-07
- SAFETY COMMITMENT 08
- UTILITY SERVICES 09-17
- ADDITIONAL ALAMON SERVICES 18-20
- BUSINESS CODES & BOND LIMITS 21
- CONTACT 22





WHO WE ARE

Company Overview

For nearly five decades, Alamon has been a key resource for Communication, Utility, Energy and Enterprise technology deployment throughout the U.S.

Employee-owned, safety-focused and known for sustained excellence and exceptional customer service, Alamon self-performs a wide variety of critical infrastructure installation and maintenance services for some of the nation's largest communication, energy and utility companies.

From Avangrid and BNSF Railway on one end of the alphabet, to T-Mobile, Verizon, and Ziplify Fiber on the other, Alamon has been trusted with the infrastructure of industry leaders on a wide variety of projects with varying scopes of work.

"Alamon is built on 49 years of performance."

— Scott Lawrence, COO

LEADERSHIP

Executive Team



BRAD CRONK

President

23 years with Alamon

brad@alamon.com



SCOTT LAWRENCE

Chief Operating Officer

25 years with Alamon

scott@alamon.com



COLLEEN LILLIE

Chief Financial Officer

6 years with Alamon

colleen@alamon.com



SHASHANA CROCKER

Human Resource Director

4 years with Alamon

shashana.crocker@alamon.com

LEADERSHIP

Utility Services Operations



NATHAN ANUNSON

Operations Manager, Western U.S.

3 years with Alamon

nathan.anunson@alamon.com



MATTHEW WARNER

Operations Manager, Eastern U.S.

3 years with Alamon

matthew.warner@alamon.com

Alamon's Utility Services operations in the west is led by Nathan Anunson. In addition to his Utility Services experience, Nathan has a strong and varied background in heavy civil construction, and has led a long list of heavy civil construction projects, including road building, underground utilities, sewer and water systems, to name just a few. Nathan's Utility West team has extensive experience working with cooperatives and municipalities on their pole inspection, treatment and reinforcement projects.

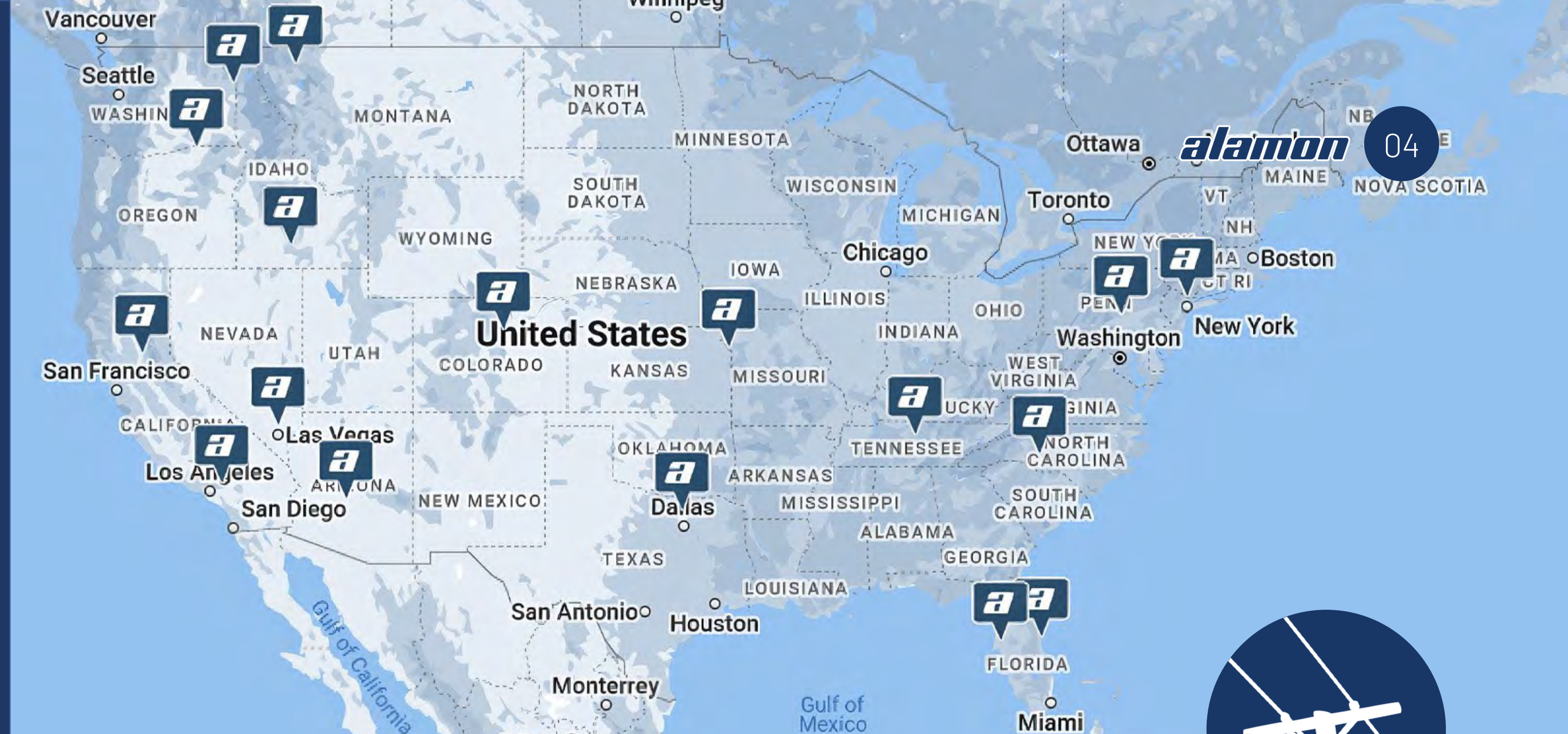
Alamon Utility Services operations in the east is led by Matthew Warner, an established industry veteran with a long work history in utility construction and maintenance. In addition to his experience overseeing a variety of successful large-scale D&T pole inspection and treatment projects in the eastern U.S., Matthew has a keen ability as a communicator and leader. He heads a strong team of supervisors and project managers with a combined 80+ years of industry experience, and a dedicated quality-control manager who has worked in the field for over 20 years.

WHERE WE ARE

With corporate headquarters in Kalispell, MT and satellite offices and warehouses across the U.S., Alamon offers broad infrastructure installation and maintenance capabilities to clients in all 50 states.

OFFICES

- Arizona
- California
- Colorado
- Florida
- Idaho
- Kansas
- Montana (HQ)
- Nevada
- New York
- North Carolina
- Oregon
- Pennsylvania
- Texas
- Washington

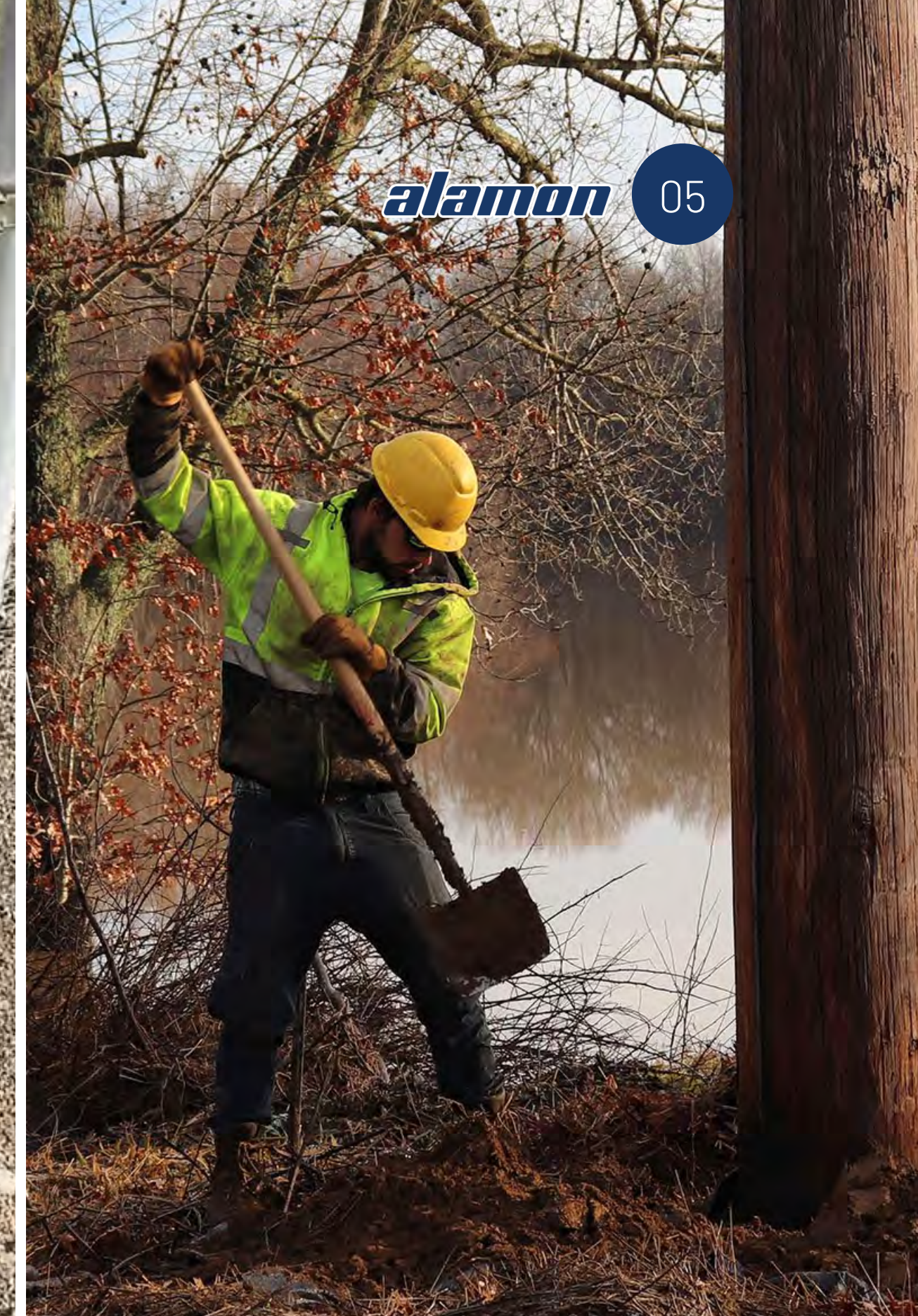


EMPLOYEE-OWNED

As an employee-owned company, Alamon has a strong culture of accountability, safety and quality workmanship that are the core strengths of our business. We view each project as an opportunity to prove ourselves and earn your trust.



"We were two years behind on inspection after another company let us down. Alamon stepped in and got us back on track."



"Alamon's expertise and efficient contract execution are among the best in the business."

"Alamon is knowledgeable, thorough, detail-oriented, and cordial to customers they encounter in the field. I highly recommend them."



WHY ALAMON?

- U.S. based company with 49 years of experience in infrastructure services and remote workforce deployment
- 15 years and millions of poles inspections in the utility services industry
- Employee-ownership culture fosters superior job performance and customer service
- Ability to serve clients in all 50 states
- Exemplary employee and subcontractor safety program
- Alatrak proprietary data collection and remote workforce management software ensures data accuracy with GIS-based validation
- High quality ratings from clients



**“We always do what’s right
for the customer, every time.”**

— Brad Cronk, President



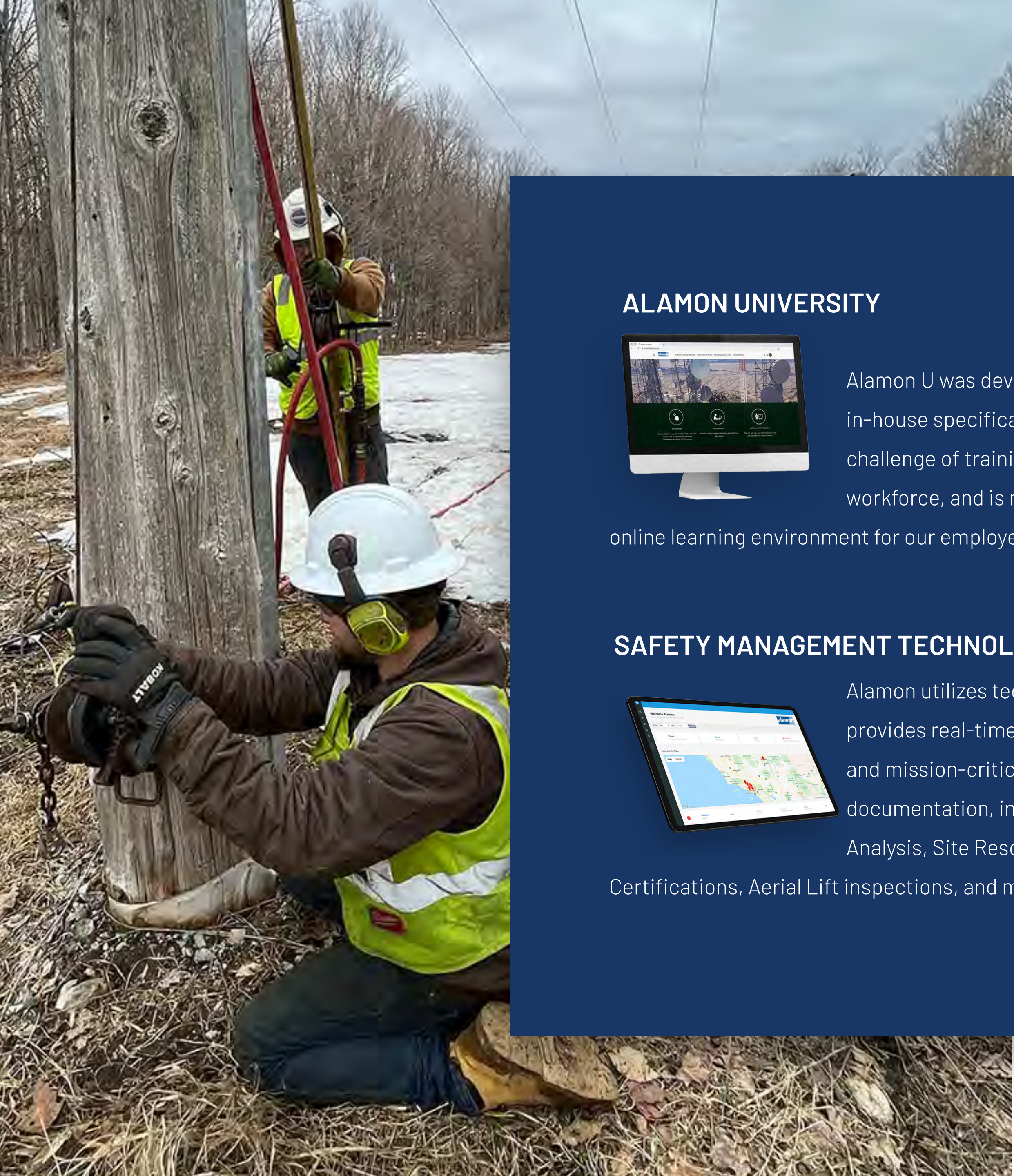
EARNED TRUST

Alamon teams' reliability and technological proficiency have produced professional relationships with Amazon, Avangrid, BNSF Railway, ConEdison, Frontier Communications, Liberty Mutual Insurance, Lumen, T-Mobile, Verizon, Wendy's, Ziplly Fiber and more.

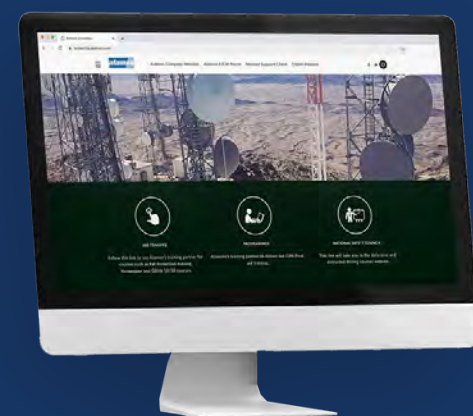


Our crews can be found in the busiest cities and the most remote rural locations in the country. We have a strong track record of managing an experienced mobile workforce to ensure our clients' projects are completed safely, on-time and on budget, no matter the location.



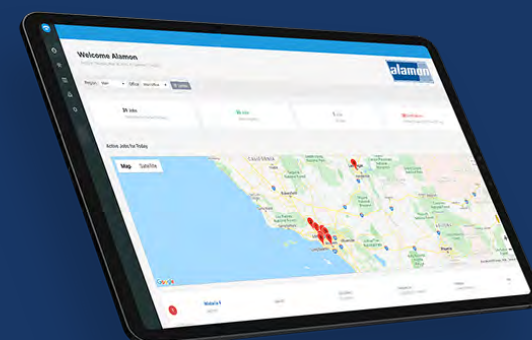


ALAMON UNIVERSITY



Alamon U was developed in-house specifically to address the challenge of training a mobile workforce, and is now an essential online learning environment for our employees across the U.S.

SAFETY MANAGEMENT TECHNOLOGY



Alamon utilizes technology that provides real-time crew tracking and mission-critical on-site safety documentation, including Job Safety Analysis, Site Rescue plans, Personnel Certifications, Aerial Lift inspections, and more.

SAFETY COMMITMENT

Our safety programs are for all employees and subcontractors. The Alamon Safety Committee consists of a broad range of members with decades of experience in the industries we serve. We engage with field and office personnel monthly to get our safety message from the top to the boots on the ground personnel. Weekly safety calls occur with each of our groups, and we continually evaluate and improve processes to ensure our teams go home in the same condition they came to work in.

Alamon is a member of ISNetworld, Avetta and Browz.

.72 EMR 2023

ALAMON UTILITY SERVICES

- **TRADITIONAL INSPECTION**

Visual, Visual + Sound + Bore, Partial Excavation, Full Excavation

- **NON-DESTRUCTIVE INSPECTION**

IML-RESI PowerDrill

- **REMEDIAL POLE TREATMENTS**

External Pastes, Internal Fumigants & Rods, Internal Void Fill Liquids

- **POLE REINFORCEMENT**

Pole Reinforcement & Restoration, Pole Strength Upgrades

- **ROTBLOC® UTL**

Non-Toxic Utility Pole Wrap for Protection at the Groundline

- **FIRE SHIELD WILDFIRE PROTECTION**

Hexion ArmorBuilt™ Resin System with Fiberglass Webbing Substrate

- **DATA DELIVERY**

GIS Import & Export, Asset Inventory, Attachment Surveys

Alatrac Proprietary Data Collection & GIS Validation



ALAMON UTILITY SERVICES

TRADITIONAL INSPECTION



VISUAL AND SOUNDING INSPECTION

The first line of defense in identifying above ground pole issues or maintenance items. Ranging from Alamon's custom list of over 50 visual inspection items, all the way to NESC/G095 Overhead Detailed Inspection.

VISUAL + SOUND + BORE INSPECTION

Adding a bore of the pole greatly increases the chances of identifying a pole with internal decay. This process helps identify internal decay and insect infestation that would not be observed on a visual/sound inspection only. Poles in this category are often treated with an Internal Fumigant Treatment.



ALAMON UTILITY SERVICES

TRADITIONAL INSPECTION



PARTIAL EXCAVATION INSPECTION

When used in conjunction with Visual/Sound/Bore inspections, the Partial Excavation adds another degree of accuracy in pole inspection, while still being cost effective. The Partial Excavation allows the inspector to spot-check for possible shell decay below the groundline without fully excavating the pole.

FULL EXCAVATION INSPECTION

The most complete and comprehensive groundline pole inspection method. By excavating all dirt from around the pole, to a depth of 18", this method allows the inspector to view the entire underground shell condition. When combined with Visual/Sound and Boring, this method of Pole Inspection gives the highest rate of inspection accuracy. Non-reject poles in this category are treated with External Treatments to further protect and extend the service life of the pole.





ALAMON UTILITY SERVICES

NON-DESTRUCTIVE INSPECTION

Alamon is the industry leader in the use of Non-Destructive IML-RESI PowerDrill® Pole Inspection Technology. For Utilities that prefer Non-Destructive pole inspection options, the IML-RESI PowerDrill® is the most advanced and accurate non-destructive pole testing method available.

The IML-RESI assesses wood quality by measuring the drill's needle resistance through the core of the wood being inspected. It is an ideal way to inspect poles that are encased in concrete or asphalt, and is a perfect solution for poles that have undergone multiple intrusive inspection cycles with larger hole boring.



GIS DRIVEN DATA



ALATRAC
GIS DRIVEN COLLECTION

Alamon's proprietary Alatrak data collection software automatically translates the IML-RESI's boring results into Industry standard pole strength analysis that is based on the RUS 1730B-121 Wood Pole and Maintenance Bulletin.

The inspection results are combined with customer specific visual inspection components which provide Utilities with all the reporting and accuracy of a traditional pole inspection program.

ALAMON UTILITY SERVICES

REMEDIAL POLE TREATMENTS

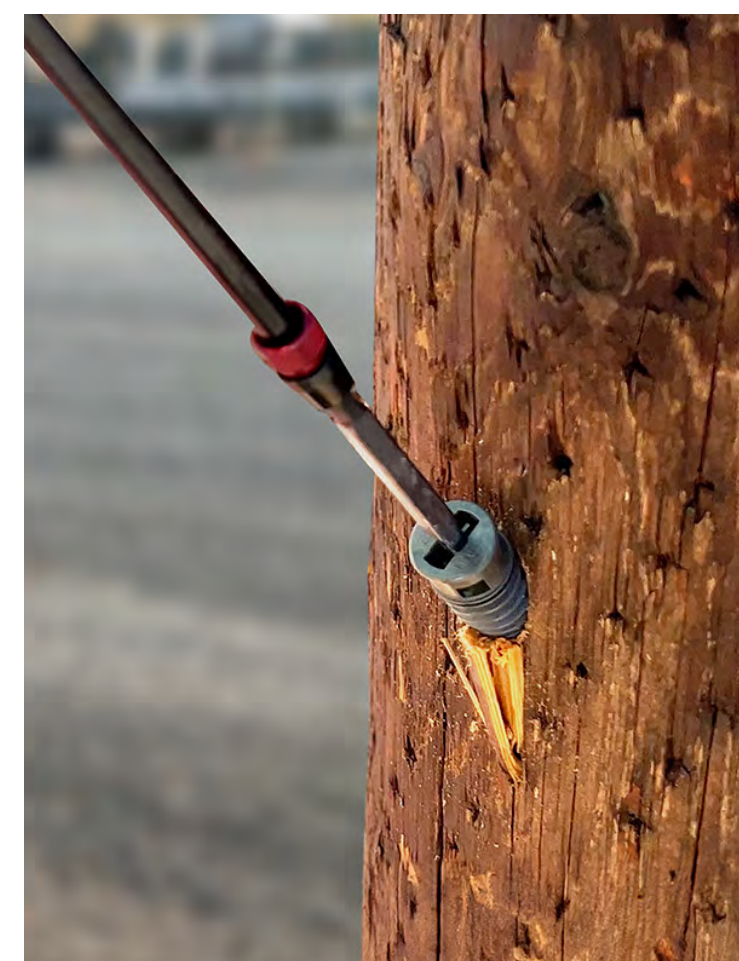
A wood utility pole's original preservative treatment will begin to fail over time, allowing wood destroying fungi and insects to advance. Ultimately, if left unchecked, these wood destroying organisms will reduce the original strength of the pole and shorten the in-service life of a valuable investment.

Alamon's Remedial Pole Treatment programs are a 'booster shot' to that pole's original preservative treatments. Alamon works with clients to help determine the best types of treatments and the frequency of application, based on geography, climate, and pole species. A timely, industry proven pole treatment program can extend the life of in-service poles beyond normal service ranges.



EXTERNAL PRESERVATIVE PASTES

External Preservative Pastes halt and prevent external decay and shell rot at and below groundline. These are used in conjunction with the Full Excavation Inspection.



INTERNAL FUMIGANTS AND RODS

Internal Fumigants and Rods protect the internal portions of the pole from decay, especially in wood species more prone to internal decay.



INTERNAL VOID FILL LIQUIDS

Internal Void Fill Liquids are for larger enclosed pockets of decay, and/or insect cavities.

ALAMON UTILITY SERVICES

POLE REINFORCEMENT

POLE REINFORCEMENT AND RESTORATION

When a wood pole's original strength has dropped below NESC standards and/or state mandated public safety requirements, the pole must be replaced or restored. Alamon's Pole Reinforcement programs help Utilities restore poles to code mandated strength requirements at a fraction of the time and cost of pole replacements. Reinforced wood poles with remedial treatments can remain in service for years to come, greatly extending the original life cycle of these valuable assets.

POLE STRENGTH UPGRADES

There is a nationwide demand to add power and communications infrastructure, and existing wood poles can be pushed beyond their maximum load capacities. Many Utilities are turning to Pole Reinforcement and/or Extended Trussing to significantly increase the class size for existing poles, while avoiding the time and expense of pole replacements. When combined with Pole Loading Analysis, Alamon can provide many solutions for increasing the carrying capacity of your existing wood poles.





ALAMON UTILITY SERVICES

ROTBLLOC® UTL

Be proactive when protecting your wood pole infrastructure investment with ROTBLLOC® UTL from Alamon. ROTBLLOC® UTL is a highly durable, cost-effective, non-toxic barrier wrap that acts like a suit of armor to protect wood poles at and below the groundline where they are most vulnerable to rot-induced failure. ROTBLLOC® UTL is installed ideally prior to pole setting, but can also be installed on any existing pole in the field at any stage of life, and incorporated into Pole Inspection and Treatment programs.

Oregon State University's Wood Science & Engineering College of Forestry exposed ROTBLLOC® to severe UV exposure and heavy rainfall for three years during field tests in Hilo, Hawaii. They found no evidence of cracking, splitting or other surface damage, and ROTBLLOC's patented material remained flexible.



"We see a number of applications for barrier systems such as ROTBLLOC that can help utilities improve pole performance."

- Jeffrey Morrell
Oregon State University

- Ideal for utility poles being set in concrete or poles that are being moved
- Keeps preservative in wood while reducing soil contact
- Beneficial for use in environments sensitive to chemical leaching
- Made from 100% recycled material
- Easy, fast application

ALAMON UTILITY SERVICES

FIRE SHIELD WILDFIRE PROTECTION

WILDFIRE PROTECTION FOR YOUR OVERHEAD INVENTORY

Armor Built™ Wildfire Shield is a durable and long-lasting resin system with unique, proprietary properties that allow it to fuse with a fiberglass webbing substrate that is strong and breathable. This helps the wood pole achieve equilibrium with climactic conditions associated with its placement. Importantly, fiberglass is also a good electrical insulator. When the pole is exposed to a wildfire, the intumescent coating activates, creating an effective heat insulation barrier which helps protect the wood from the fire's damaging heat.

INSTALLATION DETAILS

Alamon applies the system to both new and existing wood utility poles. Galvanized staples are used to attach the tightly wrapped material firmly to the pole. Poles are typically wrapped from a minimum of 1' below the groundline, and to a height consistent with fire threat. Poles wrapped with Armor Built™ Wildfire Shield can be handled and climbed just like a traditional wood pole and do not require special handling equipment or practices.



ALAMON UTILITY SERVICES

DATA DELIVERY

REPORTING

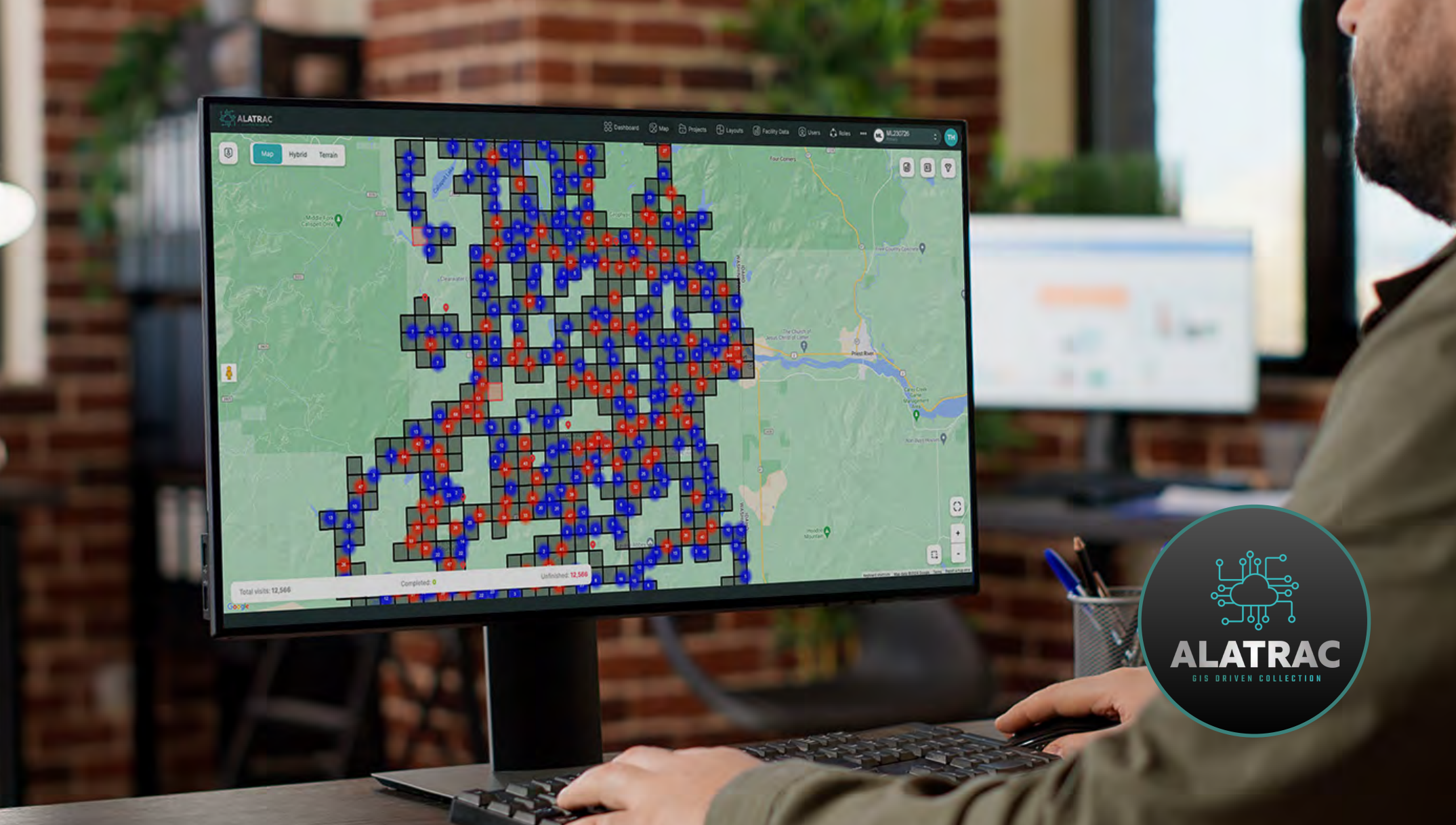
Alamon's in-house IT/GIS team works hand-in-hand with clients to deliver inspection reporting in a format and interval requested by the client. This reporting can range from simple comma separated value (.CSV) or MS Excel (.XLSX) spreadsheet files, to hosting geospatial database access with online inspection records. Our team regularly works with clients to produce GIS consumable shape files of inspection records.

MAPPING

Upon request, Alamon can provide clients with real-time online mapping options for the tracking of their inspection projects. Using GPS point data supplied by the client, Alamon's IT staff delivers the ability for the client to view daily inspection progress and results in real time during the project. Additional fees may apply.

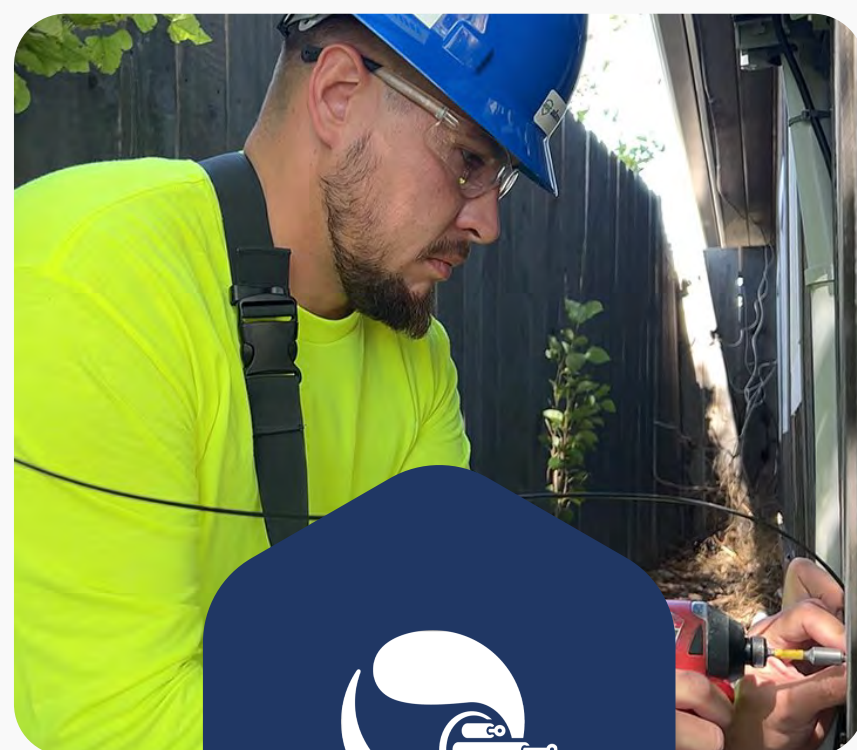
ALATRAC DATA COLLECTION SOFTWARE

Alamon's proprietary data collection platform, Alatrak, was built specifically for the heavy demands of large-scale data collection conducted by a remote workforce. It is endlessly customizable for different workflows and ensures the highest level of data accuracy using GIS validation of inspection activity in the field. Alatrak pairs with the IML-RESI PowerDrill® using Bluetooth to seamlessly import and chart inspection results, and is equally adept at collecting data via traditional inspection methods.





BUILDING THE FUTURE NOW
ADDITIONAL SERVICES



BROADBAND DEPLOYMENT SERVICES

- FTTX-FTTH
- Aerial Drops
- Single or Small Fiber Splice Repair
- Fiber Verification
- Copper Troubleshoot & Repair
- Home or Business Pre-Wire



DC POWER SERVICES

- Project Planning & Management
- Field & Detailed Engineering
- DC Power Systems Installation
- Alarm & Environmental Monitoring Systems
- Asset Management
- VISIO | AutoCAD



ENERGY SERVICES

- Battery Energy Storage System (BESS) Installation
- BESS ICT Equipment Installation for Monitoring
- BESS Battery Load Testing
- Solar System Installation
- EV Charging Station Installation
- Civil Construction

BUILDING THE FUTURE NOW
ADDITIONAL SERVICES



ENTERPRISE TECHNICAL SERVICES

- Structured Cabling
- Audio/Visual Integration
- Wireless Technology Services
- Distributed Antenna Systems (DAS)
- Break Fix Services
- Sound Masking for Speech Privacy



NETWORK SERVICES

- DC Power Engineering, Installation & Testing
- Integration/Programming & Testing
- Office Grounding Surveys
- OSP Cabinet Builds
- COEI Engineering & Installation
- Fiber Characterization



WIRELESS SERVICES

- Battery Energy Storage System (BESS) Installation
- BESS ICT Equipment Installation for Monitoring
- BESS Battery Load Testing
- Solar System Installation
- EV Charging Station Installation
- Civil Construction



SIC & NAICS CODES

SIC:

1731 & 1731-27 (Telecommunications Contractors)

1799, 4899, 7363, 7373, 2491

NAICS:

541519, 237110, 237130, 238210, 811213, 321114

BUSINESS CODES

Federal ID #: 810351417

Cage Code: 3BW85

Dun & Bradstreet #: 010366136

BOND LIMITS

\$30M aggregate (plus)

\$15M single (plus)



CONTACT



NATHAN ANUNSON

Operations Manager, Western U.S.

406.890.3152

nathan.anunson@alamon.com

MATTHEW WARNER

Operations Manager, Eastern U.S.

406.885.5645

matthew.warner@alamon.com



WEBSITE

www.alamon.com

SOCIAL MEDIA

