



# ROTBLLOC<sup>®</sup> UTL

PROACTIVE PRESERVATION FOR UTILITY POLES

Be proactive when protecting your wood pole infrastructure investment with ROTBLLOC UTL from Alamon. ROTBLLOC UTL is a highly durable, cost-effective, non-toxic barrier wrap that acts like a suit of armor to protect wood poles at and below the groundline where they are most vulnerable to rot-induced failure. ROTBLLOC UTL is installed ideally prior to pole setting, but can also be installed on any existing pole in the field at any stage of life, and incorporated into Pole Inspection and Treatment programs.



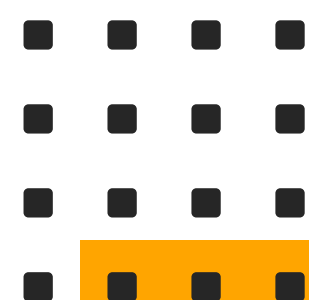
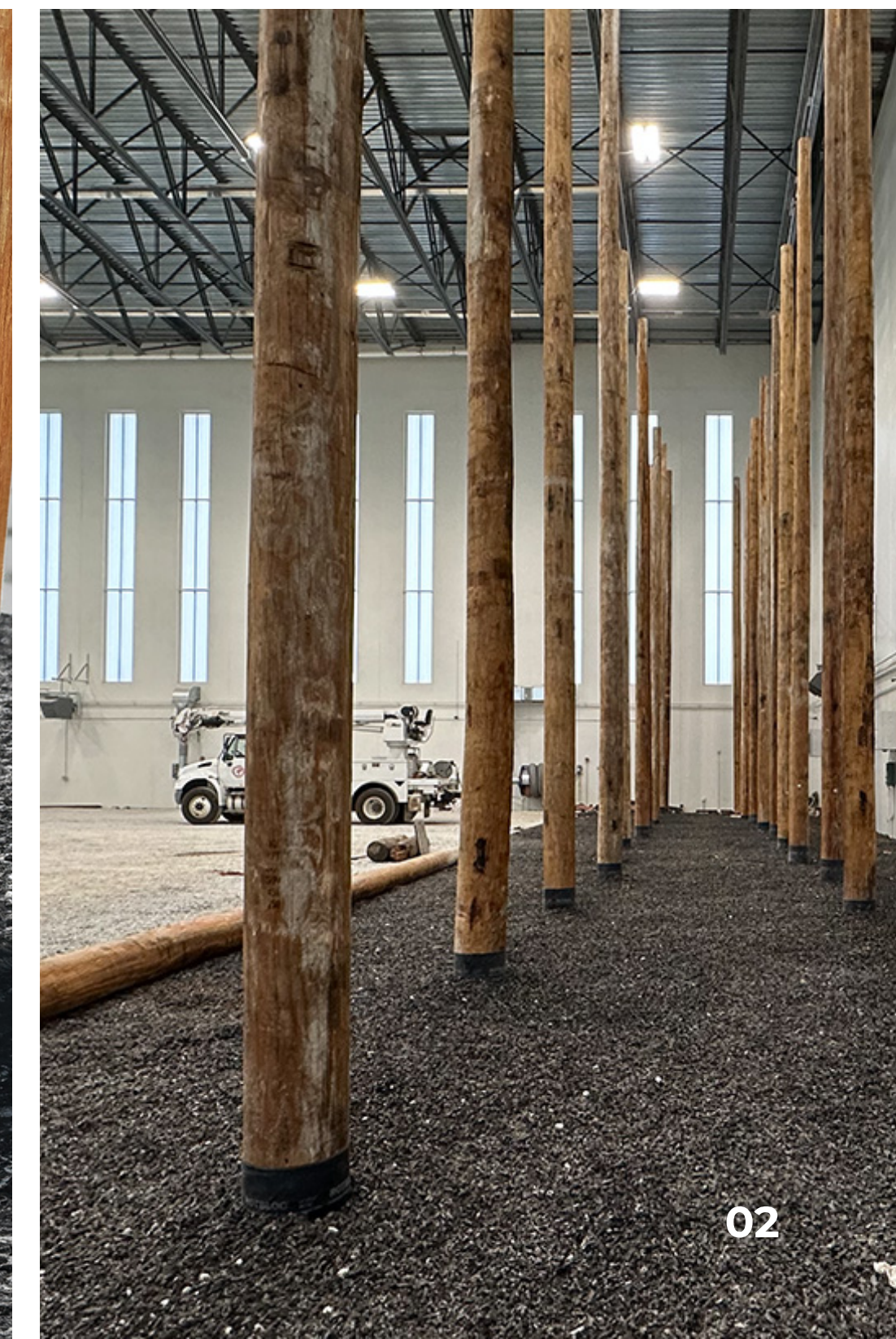
# IMPROVE POLE PERFORMANCE

Oregon State University's Wood Science & Engineering College of Forestry exposed ROTBLOC to severe UV exposure and heavy rainfall for three years during field tests in Hilo, Hawaii. They found no evidence of cracking, splitting or other surface damage, and ROTBLOC's patented material remained flexible.

*"We see a number of applications for barrier systems such as ROTBLOC that can help utilities improve pole performance."*

- Jeffrey Morrell  
Oregon State University

- Ideal for utility poles being set in concrete or poles that are being moved
- Keeps preservative in wood while reducing soil contact
- Beneficial for use in environments sensitive to chemical leaching
- Made from 100% recycled material
- Easy, fast application



# ROTBLOC® UTL ADVANTAGES

- Non-toxic Installation
- Easy, Fast Application
- Reduces Contact Between Wood and Soil
- Resistant to Tearing and Damage
- Resistant to UVA Exposure, Moisture and Decay
- Affordable Solution
- Environmentally Friendly
- Prevents Chemical Leaching
- Ideal for Poles Set in Concrete
- Made from 100% Recycled Materials

## DUAL BENEFIT PROTECTION

ROTBLOC UTL keeps chemical preservatives from migrating from the wood pole into the surrounding soil. This has the dual benefit of keeping more of the preservative in the wood, thereby contributing to a more reliable service life.



30 IN X 180 FT. / 76.2 CM THICK  
MADE IN BEND, OR



POWERED BY

# ROTBLOC®

# ROTBLOC UTL: INTEGRITY UNDER PRESSURE

ROTBLOC remains intact under pressure from the most severe UVA exposure, humidity, moisture and environmental decay pressure.

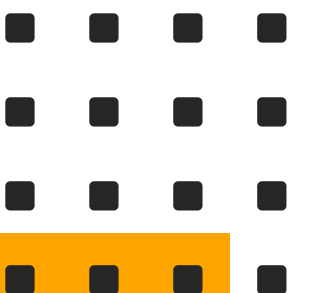


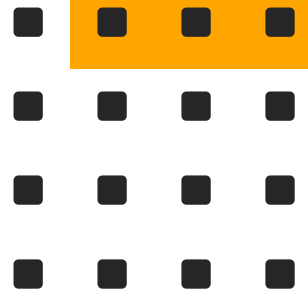
## DECADES OF R & D

Decades of Research and Development went into the compound used for ROTBLOC UTL. It is impervious to chemicals and water, and maintains its integrity under extreme environmental conditions.

## ADAPTIVE SEAL

This integrated ROTBLOC UTL feature is an inward facing flange that provides a substantial seal at the top edge. It is designed to maintain contact with the wood utility pole to help keep organic debris on the outside.





# BE PROACTIVE, NOT REACTIVE.

Your investment in wood utility poles is significant. Applying ROTBLOC UTL helps you protect that investment right away. Why should ground-line decay begin any faster than it needs to? Shield your wood and maximize the service life of your wood poles with ROTBLOC UTL.

## CONTACT:



**MATTHEW WARNER**

Operations Manager, Eastern U.S.  
Alamon Utility Services

**O:** 800.252.8838 ext. 1230

**M:** 406.885.5645

**E:** [matthew.warner@alamon.com](mailto:matthew.warner@alamon.com)