



BUILDING THE FUTURE NOW

Full-Service Nationwide Infrastructure Support



Communication

5G, Microwave, Line of Sight Surveys, Fiber, DC Power, Data Centers



Energy

Battery Energy Storage, EV Charging Stations, Solar Systems



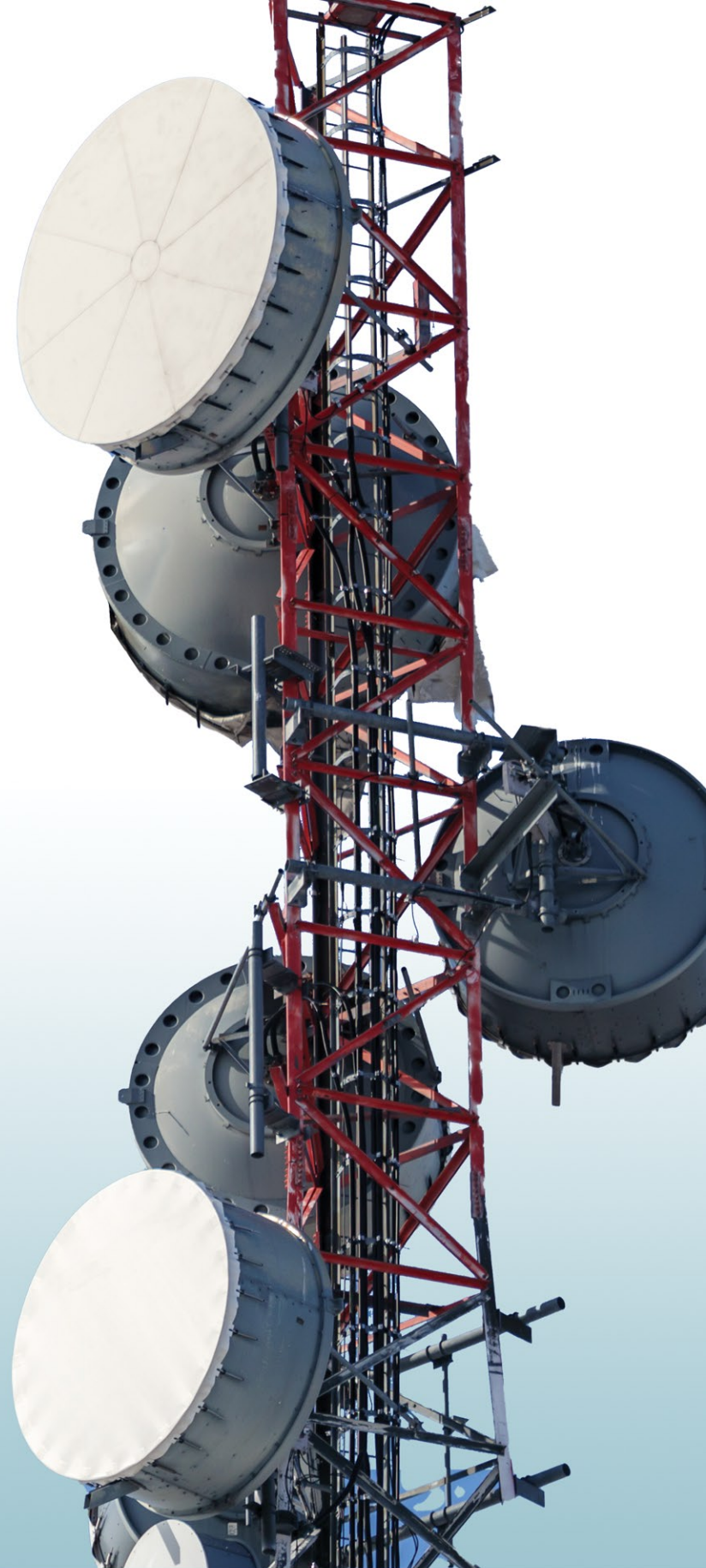
Enterprise

Structured Cabling, IT Support, IT Asset Moves, Adds & Changes



Utility

Wood Pole Inspection, Treatment & Reinforcement, Data Delivery, Fire Shield



315 W. Idaho St.
Kalispell, MT 59901
800.252.8838
www.alamon.com

SEE OUR FULL LIST OF SERVICES ON PAGE 2

Alamon Core Capabilities



Civil Construction

- Site Development
- Concrete Installation
- Equipment Pads
- Underground Conduit Installation



DC Power

- DC Plant Installation, Upgrade and Migration
- VRLA and Flooded Batteries
- Spill Containment Systems
- Field and Detail Engineering



Energy

- Battery Energy Storage System Installation
- Solar Installation
- EV Charging Station Installation
- In-House AC and DC Technicians



Enterprise

- Structured Cabling
- IT Support
- IT Asset Moves, Adds and Changes
- Sound Masking



Network

- Testing/Upgrades
- Fiber Characterization
- Site Preconditioning and Physical Installation
- Network and Structured Cabling



Outside Plant

- Fiber to the Home Installation
- Aerial and Buried Drop Placement
- Fiber Splicing and Testing



Utility

- Wood Pole Inspection, Treatment and Reinforcement
- Non-Destructive Pole Inspection
- Fire Mesh Barrier Application
- Data Delivery



Wireless

- 5G Equipment Installation and Testing
- Microwave Installation and Line of Sight Surveys
- Network Edge Equipment Installation
- Small Cell Deployment

SIC & NAICS CODES

SIC:
1731 & 1731-27
(Telecommunications Contractors),
1799, 4899, 7363, 7373, 2491
NAICS:
541519, 237110, 237130, 238210, 811213, 321114

BUSINESS CODES

Federal ID #: 810351417
Cage Code: 3BW85
Dun & Bradstreet #: 010366136

BOND LIMITS

\$30M aggregate (plus)
\$15M single (plus)

alamon
BUILDING THE FUTURE NOW