



Battery Energy Storage System (BESS)  
Arizona Project

BUILDING THE FUTURE NOW



## PROJECT DETAILS

### 10 MW 40 Hour BESS Power Plant Installation

- 236 Battery Racks
- 3304 Lithium Ion Batteries
- 4- 4000 AMP Switchboards
- 120/208v & 480v A/C Installation and Test
- 480v Megger Test Verification
- 4 fully equipped Telco Communication Racks
- Ethernet, and USB cable Installation and Testing
- Fiber Splicing and OTDR Testing
- OSP Fiber Splicing
- ESTOP circuits Installation and Testing
- Wireless access point Installation and Testing
- Environmental monitoring equipment, Leak Ropes, Cameras, Temperature Sensors



36" Aluminum Latus Cable tray above lineups





Core 1 Battery Racks Rows 1 & 2





Switchboard Cables Ready to Terminate





Switchboard Feeder Power Cable from Transformer



Preparing Power Cables for Switchboard Megger Testing





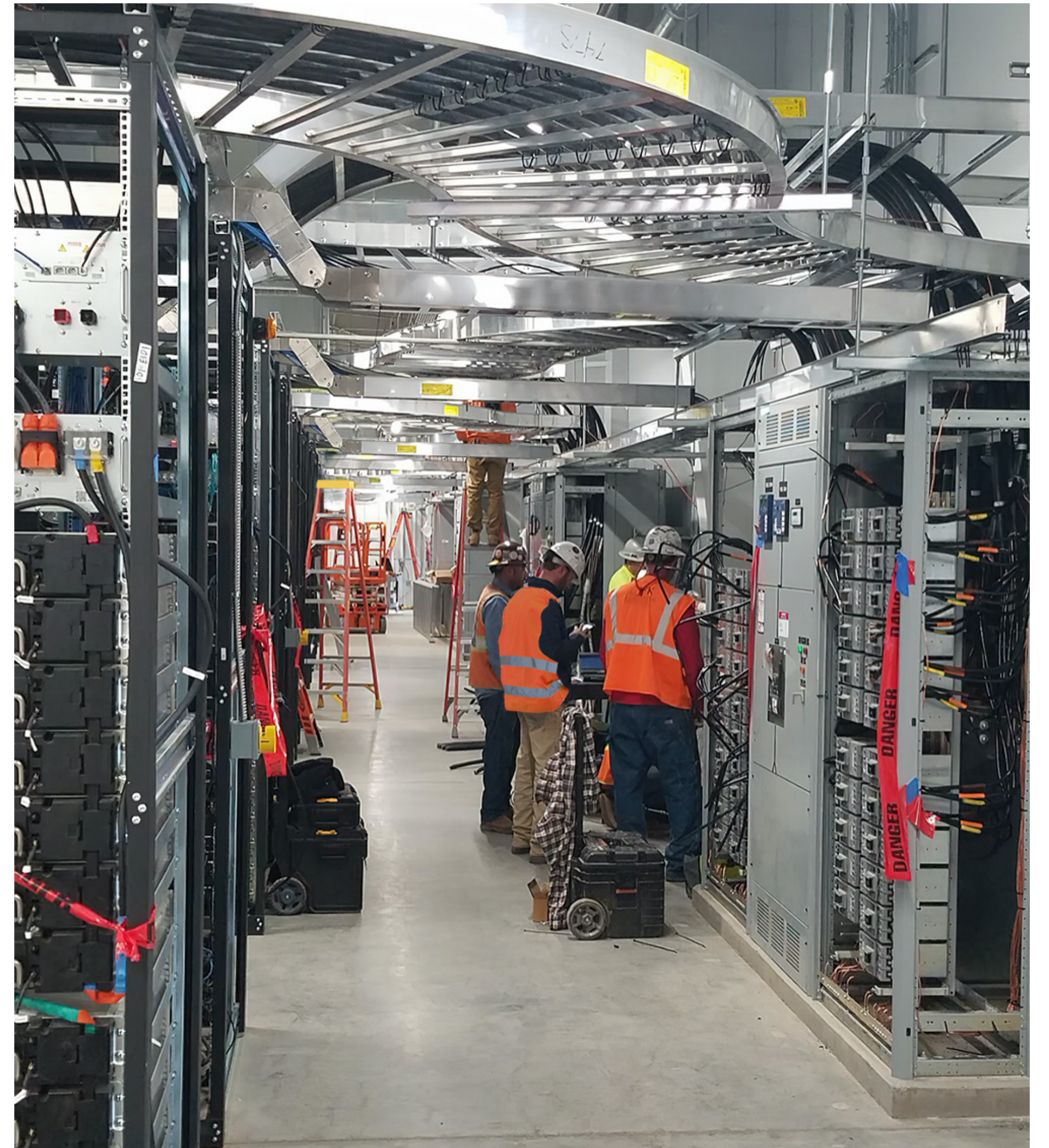
4000 AMP Switchboard





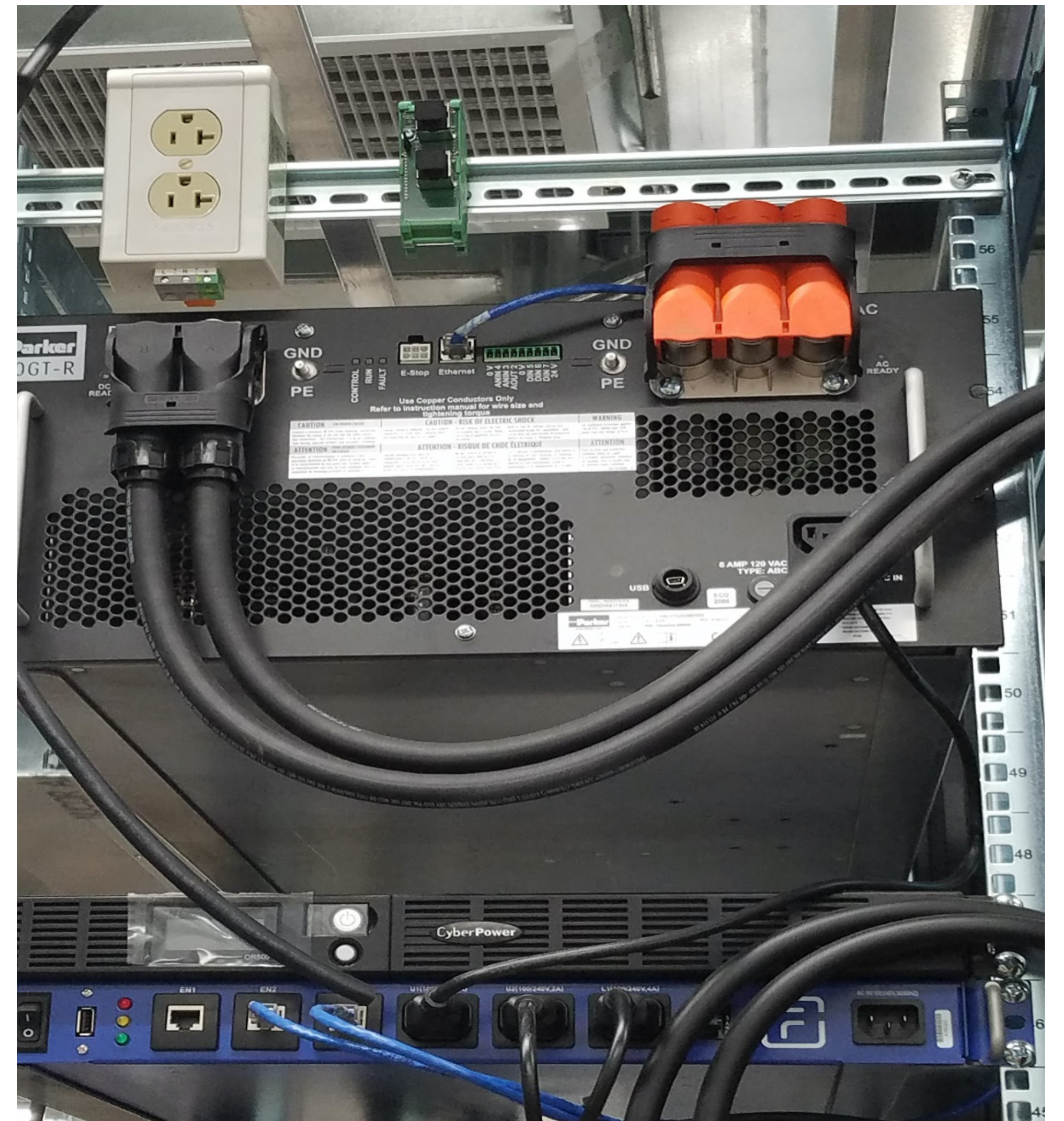


Transition Cable Tray and 480V Power Cabling





## DIN Rail and Inverter Installation



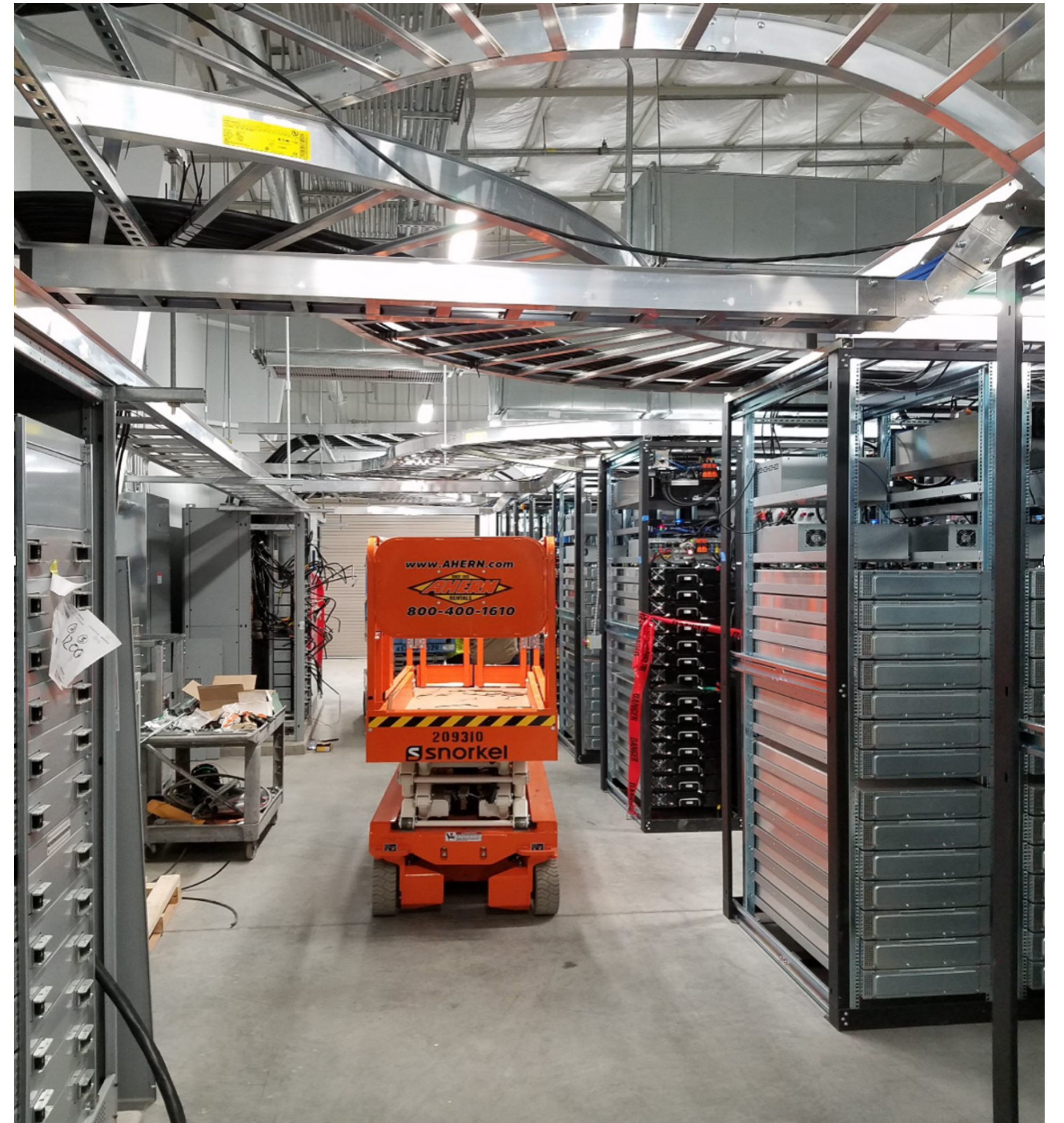


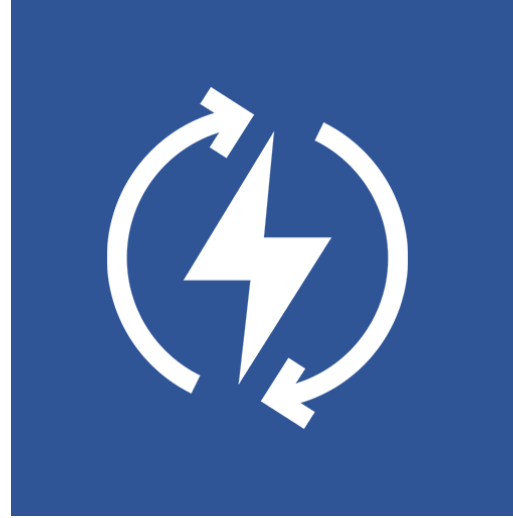
Battery Racks with Cabling and Electronics Installed





Transition Cable Tray Battery Racks to Switchboards





# CONTACT

**PATRICK DOYLE**

Business Development

919.306.3147

[patrick.doyle@alamon.com](mailto:patrick.doyle@alamon.com)

**JUSTIN PRATT**

Supervisor, Energy Services

406.885.9421

[justin.pratt@alamon.com](mailto:justin.pratt@alamon.com)

BUILDING THE FUTURE NOW