

Full-Service Nationwide Infrastructure Support



Communication

5G, Microwave, Line of
Sight Surveys, Fiber,
DC Power, Data Centers



Energy

Battery Energy Storage,
EV Charging Stations,
Solar Systems



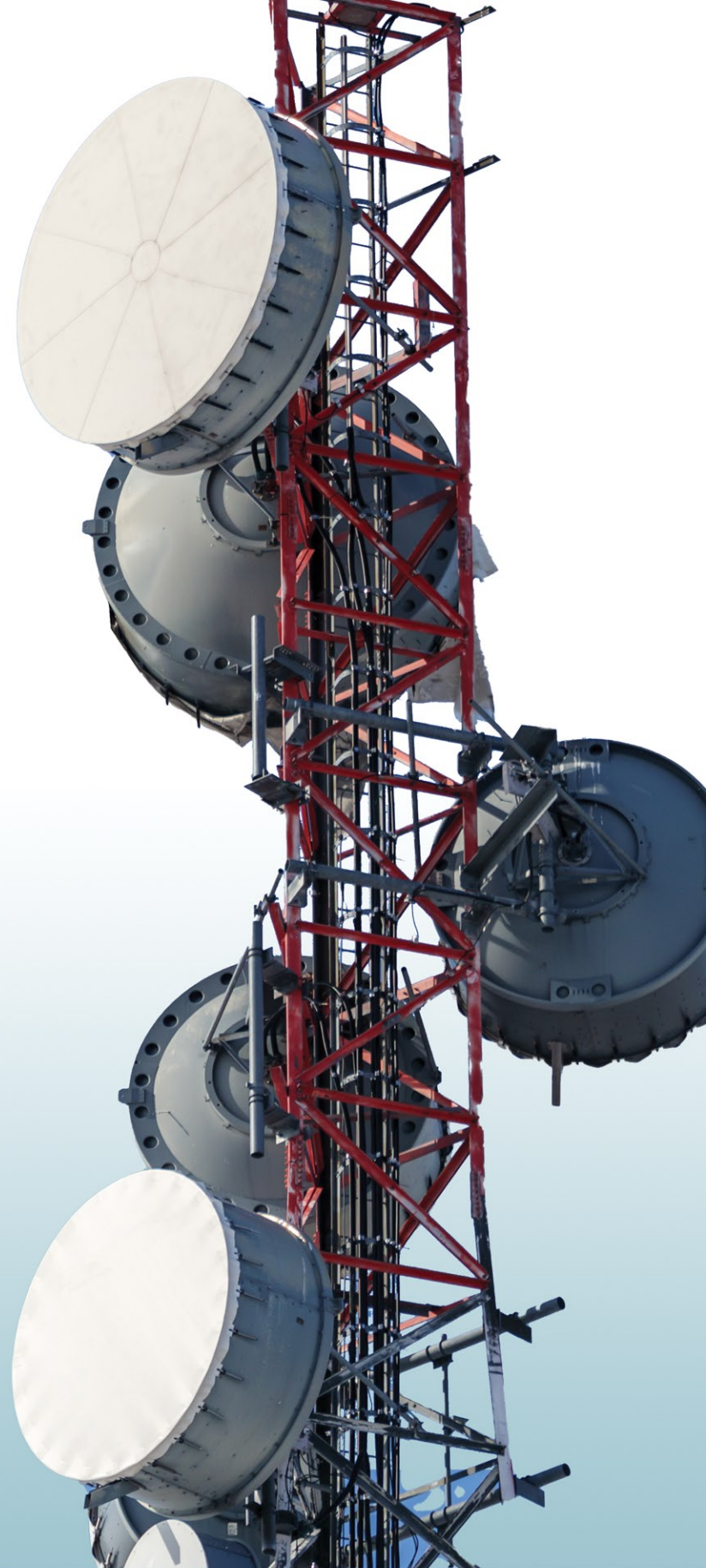
Enterprise

Structured Cabling,
IT Support, IT Asset
Moves, Adds & Changes



Utility

Wood Pole Inspection,
Treatment & Reinforcement,
Data Delivery, Fire Shield



315 W. Idaho St.
Kalispell, MT 59901
800.252.8838
www.alamon.com

SEE OUR FULL LIST OF SERVICES ON PAGE 2

Core Capabilities



Civil Construction

- Site Development
- Concrete Installation
- Underground Conduit Installation



DC Power

- DC Plant Installation, Upgrade & Migration
- VRLA and Flooded Batteries
- Spill Containment Systems
- Field and Detail Engineering



Energy

- Battery Energy Storage System Installation
- Solar Installation (Ground and Roof Mounted)
- EV Charging Station Installation
- In-House AC and DC Technicians
- Traditional Electrical Services
- Communications Cabling and Alarm Monitoring



Enterprise

- Structured Cabling
- IT Support
- IT Asset Moves, Adds and Changes
- Secure IT Asset Disposition
- Distributed Antenna Systems
- Sound Masking



Network

- Testing/Upgrades
- Fiber Characterization
- Site Preconditioning and Physical Installation
- Network and Structured Cabling
- Data Centers



Outside Plant

- Fiber to the Home Installation
- Aerial and Buried Drop Placement
- Fiber Splicing and Testing



Utility

- Wood Pole Inspection, Treatment and Reinforcement
- Non-Destructive Wood Pole Inspection
- Fire Mesh Barrier Application
- Data Delivery



Wireless

- 5G Equipment Installation and Testing
- Microwave Installation and Line of Sight Surveys
- Network Edge Equipment Installation
- Small Cell Deployment
- Maintenance Services/Emergency Response
- Auditing
- Decommissioning

Certifications



Bond Limits

\$30M aggregate (plus)
\$15M single (plus)

NAICS Codes

237130
238210
321114

alamon
BUILDING THE FUTURE NOW