

Alamon is headquartered in Kalispell, Montana, which acts as our communications hub for all branch offices and field personnel based throughout the United States. With a presence in major market areas, Alamon Telco, Inc. is always there and available to provide services you need.

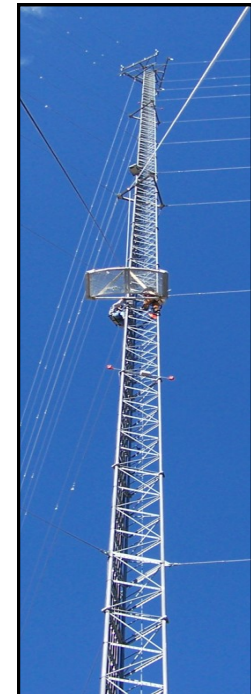
Please give Alamon a call at (800) 252 - 8838 if we can assist in answering any questions you might have about our overall scope of services. Competitive rates and quotes are available upon request.

Alamon can also be found on our website at [www.alamon.com](http://www.alamon.com) or reached by email at [info@alamon.com](mailto:info@alamon.com). Our business hours are from 8:00 a.m. to 5:00 p.m. MST, Monday through Friday.



'Quality, Reliability, Professionalism'

Wireless Services



Alamon  
Telco, Inc.

315 West Idaho  
Kalispell, Montana 59901

1-800-252-8838  
Fax 1-800-468-2645  
[www.alamon.com](http://www.alamon.com)

**Alamon Telco, Inc. was incorporated in 1975 to provide contract labor to the telecommunications industry. In order to address our customers' needs, Alamon provides many Tower services including installation, testing & alignment and construction.**



## Available Services

### Installation

- Antenna Systems
  - Radios
- DC Power Plants
  - Cabinets
- Antenna Support Structures

### Testing & Alignment & System Integration

- Antenna Systems
  - Radio Systems
- Microwave Applications
- GPS Antenna Alignment

### Construction

- Tower Foundations
  - Tower Erection
  - Access Roads
- Access to Utilities



For Quotes & Information  
Contact:  
Terry Mickens  
terry@alamon.com  
(800) 252 - 8838

### Installation Services include:

- Antennas
- Antenna Stealth Applications
- Distributed Antenna System's
- Temporary Antenna Systems
- Network System Upgrades
- Coax, Fiber, Structured Cabling



### Testing Services include:

- Test equipment calibrated regularly to insure precise and accurate results
- Customers are supplied with test results in an electronic format
- RFC2544, DSN BER Testing
- Spectrum Analysis
- OTDR Testing
- Ethernet Cable Qualification

