



Alamon is building the future now.

Enterprise Technical Services (ETS) is a division of Alamon, Inc., an established infrastructure services provider with a long history of successful nationwide deployments.

Contents

WHO WE ARE	03
Introduction to Alamon / ETS	
WHO COUNTS ON US?	04
Notable clients and projects	
ENTERPRISE TECHNICAL SERVICES	05
Our core enterprise services	
ALAMON SERVICES OVERVIEW	
All services, organized by department	06
CONTACT	
Principal contact, corporate HQ	07

Who we are

“Most of our business has been gathered from referrals. Our marketing department is brand new. This company is built upon and developed over 45 years of performance.”

Scott Lawrence
Chief Operating Officer

Alamon has grown over 200% since 2016.

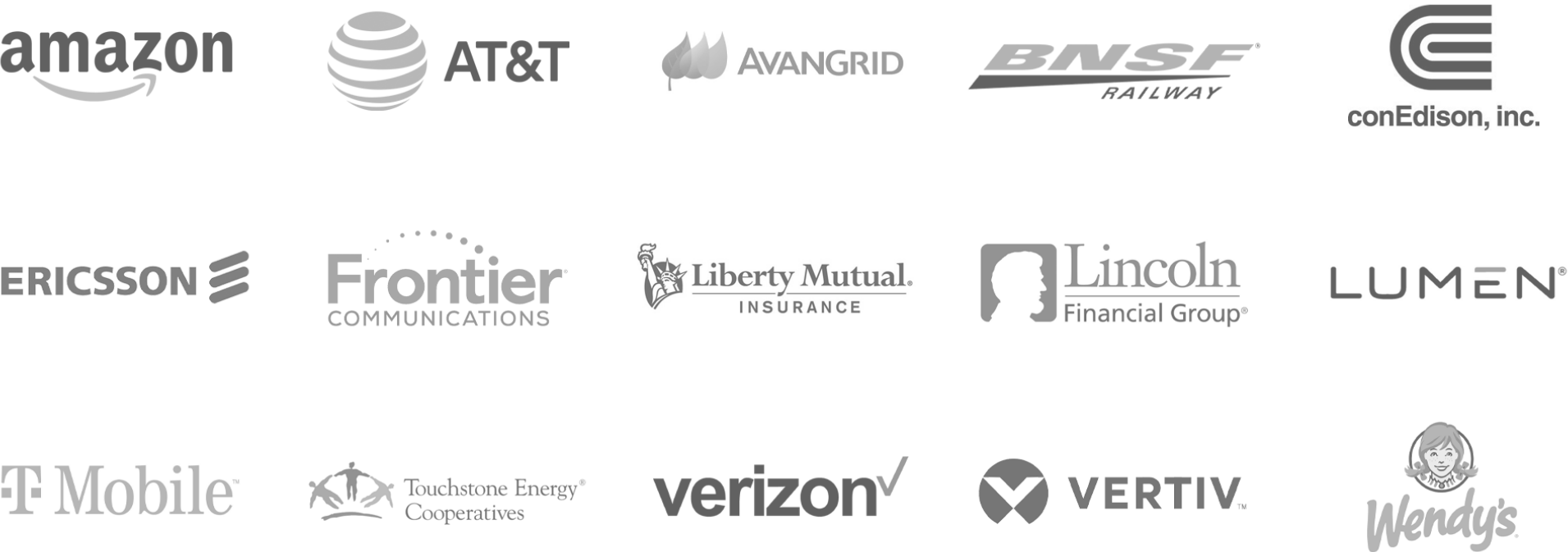
Enterprise Technical Services (ETS) is a division of Alamon, Inc. that specializes in logistics and delivery of multi-site technology deployments across North America. Our extensive experience with the unique challenges of these types of service deliveries gives us deep understanding of what it takes to complete projects on time, on budget, and to the highest quality standards.

Our parent company, **Alamon, Inc.**, began in 1975 as a telecommunications contracting firm with a single warehouse in Kalispell, Montana. Today, the company provides skilled technical services for Enterprise, Communication, Utility and Energy customers, and has seven divisions with satellite offices in 11 states across the U.S.



Who counts on us?

Alamon teams' reliability and technological proficiency have produced professional relationships with Amazon, AT&T, Avangrid, BNSF Railway, ConEdison, Ericsson, Frontier, Liberty Mutual, Lincoln Financial Group, Lumen (formerly Centurylink), T-Mobile, Touchstone Energy Cooperatives, Verizon, Vertiv, Wendy's, and multiple telephone cooperatives and Investor Owned Utilities.



Since the very beginning in 1975, Alamon crews have worked coast to coast, from the busiest cities, to the most remote and rural locations in the country. We have a strong track record of managing and deploying an experienced mobile workforce to ensure our clients' projects are completed safely, on-time and on budget, no matter the location.

“Nationwide Service is more than a tag line, it is the foundation of Alamon’s business.”

Project examples

Nationwide Rollouts



Liberty Mutual Insurance

- Continuous remote office support for over 25 years, including installation of every piece of IT equipment at Liberty Mutual U.S. facilities.



Lincoln Financial Group

- Enterprise level support for all Lincoln Financial Group facilities, including a Windows 10 Desktop Deployment.
- Network IT equipment refresh for all key city facilities.
- Currently delivering a PDU Deployment to 113 agency offices.



Nestlé

- Wireless Survey & Design (heat mapping) and AP Installation at production/warehouse facilities nationwide.



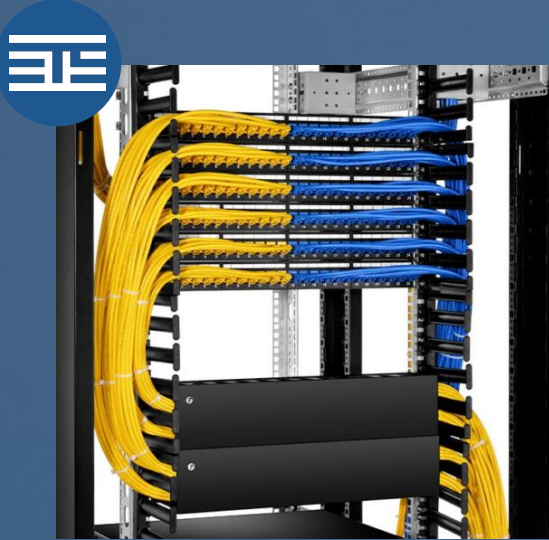
Pepsi

- Ongoing EOL Cisco 2900 Series switch replacement initiative nationwide.



Vertiv

- UPS Refresh and Deployment for CVS, Target, Humana, Wyndham and others.
- ETS provides UPS Certification and Startup for Vertiv's enhanced warranty program.



STRUCTURED
CABLING

Including network and wireless components for commercial, retail and industrial projects.

- Industry standards compliant - TIA/EIA and BICSI
- RCDD Design & Planning
- Installation & Project Management
- Validation/Certification



NATIONAL
DEPLOYMENTS

ETS built our field capabilities for scalability. Typical projects include data room buildouts and network equipment installations.

- Network Equipment Procurement
- Maintenance, Troubleshooting & Support
- Server Installations & Upgrades



IT ASSET
RELOCATION

Including workstation relocation support, closet equipment (data and voice), and structured cabling.

- Personnel Move Logistics, Planning & Coordination
- Asset/Office Equipment/ Workstation Move Planning & Coordination
- Live Day Support for Office following Relocation



IT EQUIPMENT
TECHNICIANS

ETS provides experienced IT Technicians to work with, for or at the direction of your Network IT teams supporting installation, maintenance and upgrades of your network IT equipment.

- Campus Facility Support
- Onsite Datacenter Support
- Remote Facility Support
- Break/Fix Dispatch



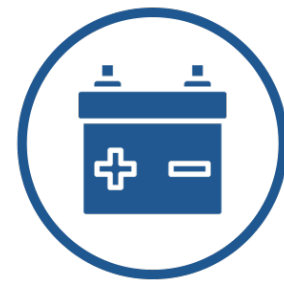
SOUND
MASKING

ETS specializes in deploying solutions that limit speech noise in a given space to increase concentration and productivity.

- Reduce Noise Distractions
- Protect Speech Privacy (HIPAA)
- Increase Office Comfort and Productivity
- Ongoing Maintenance and Tuning

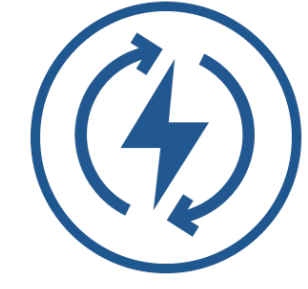


Services



DC Power

- DC Plant Installations, Upgrades, Replacements and Migrations
- VRLA and Flooded Batteries
- Spill Containment Systems
- Field and Detail Engineering



Energy

- Battery Energy Storage Systems In-Building
- Battery Energy Storage Systems Modular Container Solutions
- Battery Energy Storage Systems Monitoring Systems
- Renewable Energy Project Installation



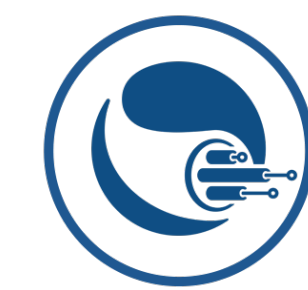
Enterprise

- Structured Cabling
- National Deployments
- IT Asset Relocation
- Smart Hands Technicians
- Sound Masking
- UPS Installation



Network

- Testing/Upgrades
- Fiber Characterization
- Site Preconditioning and Physical Installation
- Network and Structured Cabling
- Data Centers



Outside Plant

- Fiber to the Home Installation
- Aerial and Buried Drop Placement
- Fiber Splicing and Testing
- Copper Splicing
- OSP Inspecting



Utility

- Pole Inspection and Treatment
- Pole Reinforcement
- Non-Destructive Pole Inspection (IML-RESI PowerDrill)
- Pole Loading Analysis
- Data Delivery



Wireless

- 5G Equipment Installation
- Microwave Installation and Line of Sight Surveys
- Network Edge Equipment Installation
- Small Cell Deployment

Contact

CORPORATE HQ
Alamon, Inc.
315 West Idaho Street
Kalispell, MT 59901
800.252.8838
www.alamon.com

