

ABOUT ALAMON

If you're in search of an experienced, reliable company for all your Engineering and DC Power needs, look no further than Alamon.

Since its founding in 1975, Alamon has developed long-term relationships with many of the country's most recognizable corporations — Verizon, CenturyLink, Frontier Communications and more. Our 12 regional offices found throughout the United States enable us to work with high-profile and small companies alike, in any location.

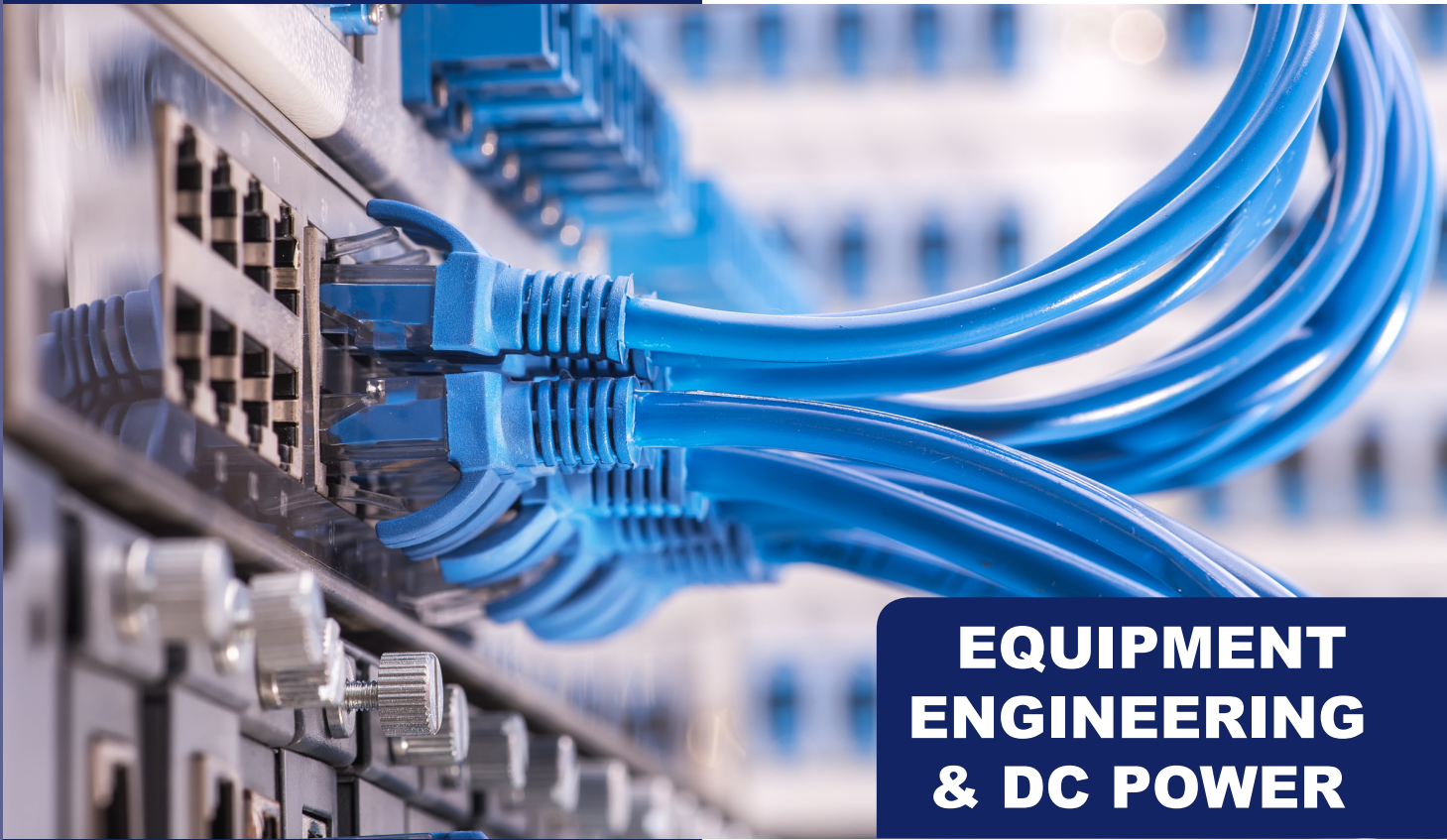
Our reputation for quality workmanship and on-time delivery is documented by our customer ratings, as we consistently earn top scores on our engineering audits. We are known for keeping defects to a minimum and pride ourselves on doing things right the first time. Our quality and customer service offer the best value for your money.

Alamon's Engineering Department specializes in DC Power, Synchronization, Data/Internet/Voice Networks, and OSS/ Alarm Systems. Our trained staff can also provide Planning, Field Engineering, and Design Engineering services.

As an employee-owned company, Alamon has developed a dedicated and well-trained staff of career-minded professionals. Because turnover is low, our customers know they're going to receive consistent service from one job to the next.

Alamon covers almost every segment of the communications industry. If you have a need, we can fill it.

SUPERIOR QUALITY
RELIABLE SERVICE
ADVANCED TECHNOLOGY



EQUIPMENT
ENGINEERING
& DC POWER

ALAMON TELCO, INC.

315 WEST IDAHO
KALISPELL, MONTANA 59901

1-800-252-8838
www.alamon.com

FOR QUOTES OR
MORE INFORMATION, CONTACT:

MIKE GALLAGHER
mike@alamon.com

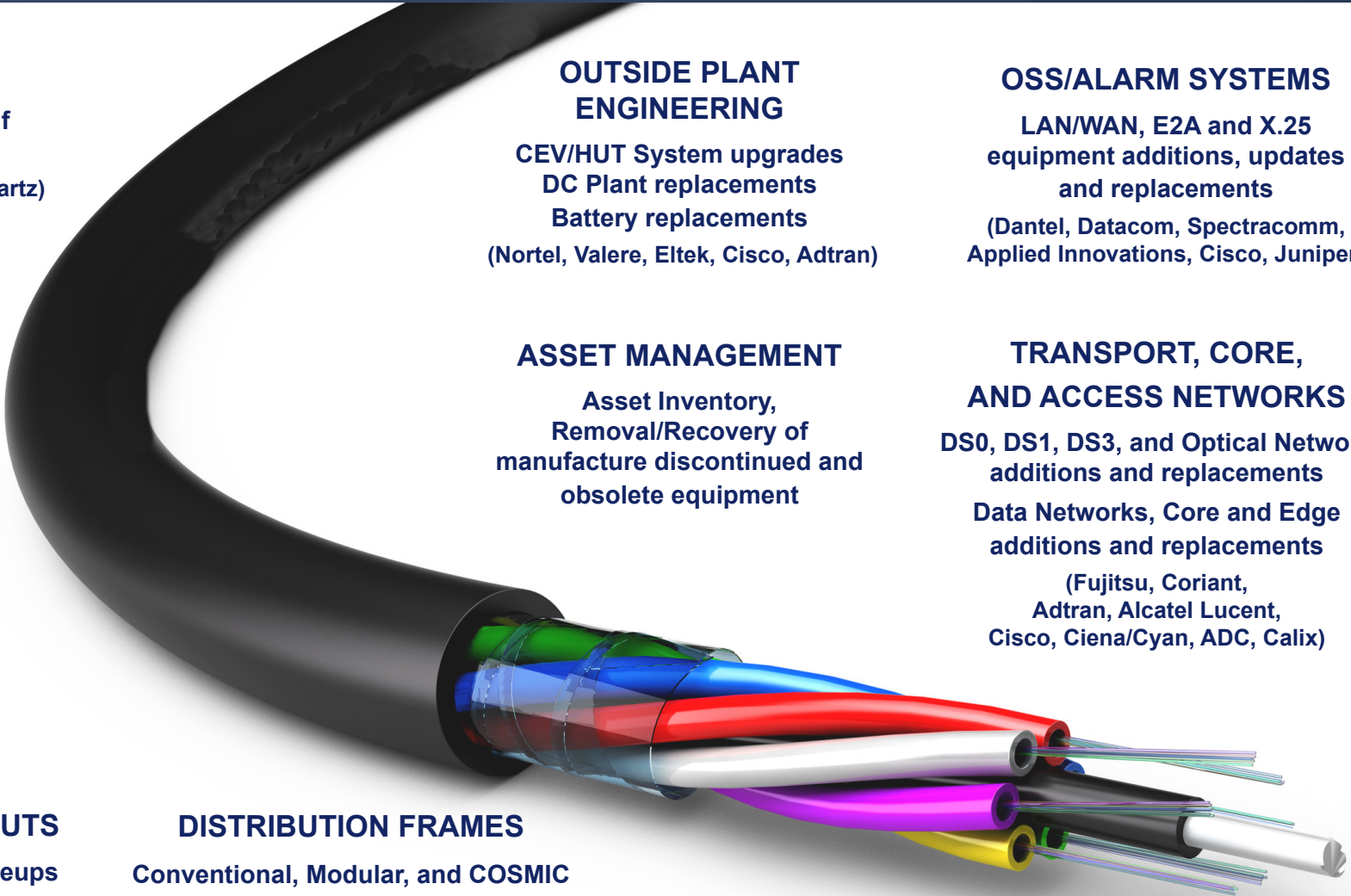


OUR ENGINEERING SERVICES

- SYNCHRONIZATION**
Cesium Clock, GPS, BITS Shelf additions and replacements
(Symmetricom/Microsemi, Oscilloquartz)
- DC POWER SYSTEMS**
Large and Small Power Plants including: Monitoring, Battery Systems, Secondary Power Distribution BDFB and BDCBB, Spill Containment Systems
(Lucent/Lineage/Tyco/GE Power, Lorain/Marconi/Emerson, Valere, Eltek, EEE, C&D)
- ENVIRONMENTAL BUILD-OUTS**
Cable Racking and Next Gen Lineups
(Newton, Moreng, Panduit, CommScope, Chatsworth)

- OUTSIDE PLANT ENGINEERING**
CEV/HUT System upgrades
DC Plant replacements
Battery replacements
(Nortel, Valere, Eltek, Cisco, Adtran)
- ASSET MANAGEMENT**
Asset Inventory, Removal/Recovery of manufacture discontinued and obsolete equipment
- DISTRIBUTION FRAMES**
Conventional, Modular, and COSMIC
(Lucent, CommScope, Moreng)

- OSS/ALARM SYSTEMS**
LAN/WAN, E2A and X.25 equipment additions, updates and replacements
(Dantel, Datacom, Spectracomm, Applied Innovations, Cisco, Juniper)
- TRANSPORT, CORE, AND ACCESS NETWORKS**
DS0, DS1, DS3, and Optical Network additions and replacements
Data Networks, Core and Edge additions and replacements
(Fujitsu, Coriant, Adtran, Alcatel Lucent, Cisco, Ciena/Cyan, ADC, Calix)



WHY CHOOSE ALAMON?

QUALITY & ON-TIME DELIVERY
For over 40 years, Alamon has consistently provided the highest levels of quality, service and workmanship. Through delivering customers' projects on time and on budget, Alamon takes pride in building long-term relationships that span decades.

VALUE FOR THE COST
Alamon gets it right the first time, at a fair price. Our vast industry knowledge allows us to bid jobs accurately — we know what it takes to get your work done. Our customers don't have to deal with change orders for inaccurately bid jobs.

SERVICE PROTECTION
The biggest names in communications and data services regularly entrust Alamon with their networks. We have the knowledge and experience to safely upgrade, expand, or enhance your existing infrastructure.